



## Monthly PM Fire alarm &amp; Fire protection system on August 2023



To

Cc  Sririchien, Rattana RS;  Subin Karma;  Rattanapong.b@tkfs.co.th;  Sunisa Sumsirom;  Chanawong Chanasit (TKFS Thailand);  Boonphang, Sonthaya SB;  Soontaros, Songpon SS;  jutaporn.s@tkfs.co.th;  Sunisa Sumsirom (TKFS Thailand);  Chanisara.P@tkfs.co.th

**i** This message was sent with High importance.

Mon 21-Aug-23 11:16 AM

⑤

Reply

« Reply All

→ Forward

⋮



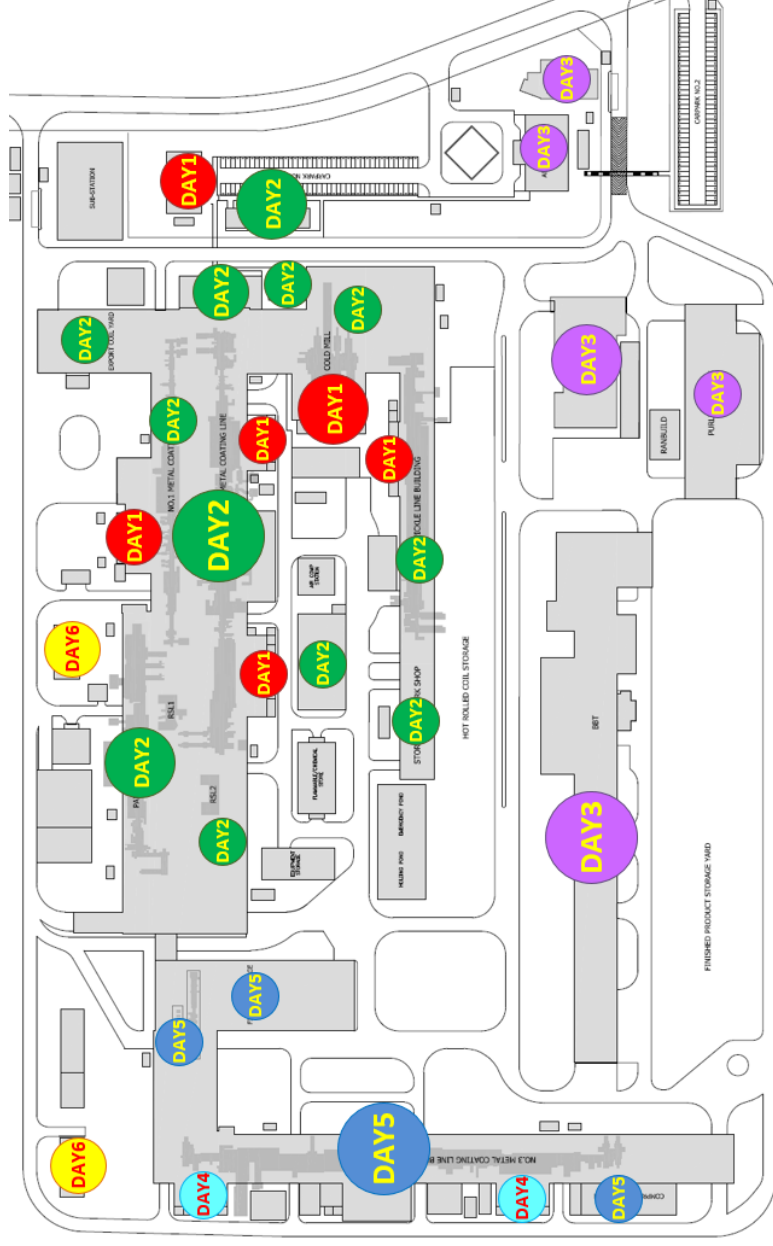
Dear all,

Plant Facility will have preventive maintenance fire alarm & fire protection system by TAKACHIHO team on **24-30 August 2023** if you hear alarm from fire alarm system.

**Don't panic and you can work as usual** (We will notify supervisory staff in the area before activating test)

### Schedule plan for test fire alarm & fire protection system

Day 1 (24 AUGUST 2023)			
09:00	12:00	Test Fire protection EER,CRM, EER,PKL	
12:00	12:30	Test Fire protection <b>Server Room (Support Building)</b>	
12:30	13:00	Test Fire alarm at <b>Support building</b>	
13:00	15:00	Test Fire protection EER,MCL1	
15:00	17:00	Test Fire protection EER,MCL2 (Entry, Main EER.)	
Day 2 (25 AUGUST 2023)			
09:00	12:00	Test Fire alarm at MCL2	
12:00	12:30	Test Fire alarm at <b>Operation building</b>	
12:30	13:00	Test Fire alarm at <b>Amenity building</b>	
13:00	14:00	Test Fire alarm at PKL, Work shop, Warehouse	
14:00	15:00	Test Fire alarm at CRM, Roll shop, Canteen	
15:00	16:00	Test Fire alarm at MCL1	
16:00	16:30	Test Fire alarm at CPL, WWTP	
16:30	17:00	Test Fire alarm at Finished Storage Warehouse	
Day 3 (26 AUGUST 2023)			
09:00	10:00	Test Fire alarm at Smarttruss factory	
10:00	12:00	Test Fire alarm at Purlin building	
12:00	12:30	Test Fire alarm at <b>Admin building</b>	
12:30	13:00	Test Fire alarm at <b>Training Center</b>	
13:00	15:00	Test Fire alarm at Roof & Wall Factory	
15:00	17:00	Flush out the pipe of fire hydrant at Roof & Wall Factory	
Day 4 (28 AUGUST 2023)			
09:00	12:00	Test Fire protection EER,MCL3 (Entry, Main EER.)	
12:00	12:30	Test Fire alarm at <b>LAB (MCL3)</b>	
13:00	17:00	Test Fire protection EER,MCL3 (Entry, Main EER.)	
Day 5 (29 AUGUST 2023)			
09:00	12:00	Test Fire alarm at MCL3	
12:30	13:00	Test Fire alarm at <b>WWTP (MCL3)</b>	
13:00	15:00	Test Fire alarm at MCL3	
15:00	17:00	Test Fire alarm at Gamlang Warehouse	
Day 6 (30 AUGUST 2023)			
09:00	12:00	Test flow rate hydrant & hose reel of Fire Water System MCL1	
13:00	17:00	Test flow rate hydrant & hose reel of Fire Water system MCL3	







## Monthly PM Fire alarm & Fire protection system on October 2023



To Khunweeraphong, Chalermphol CK

Cc

Sirichinlert, Rattana RS; Subin Kanna; Rattanapong.b@tkfs.co.th; Sunisa Sumsiripong; Boonphang, Sonthaya SB; jutaporn.s@tkfs.co.th; Sunisa Sumsiripong [TKFS Thailand]; Chanisara.P@tkfs.co.th

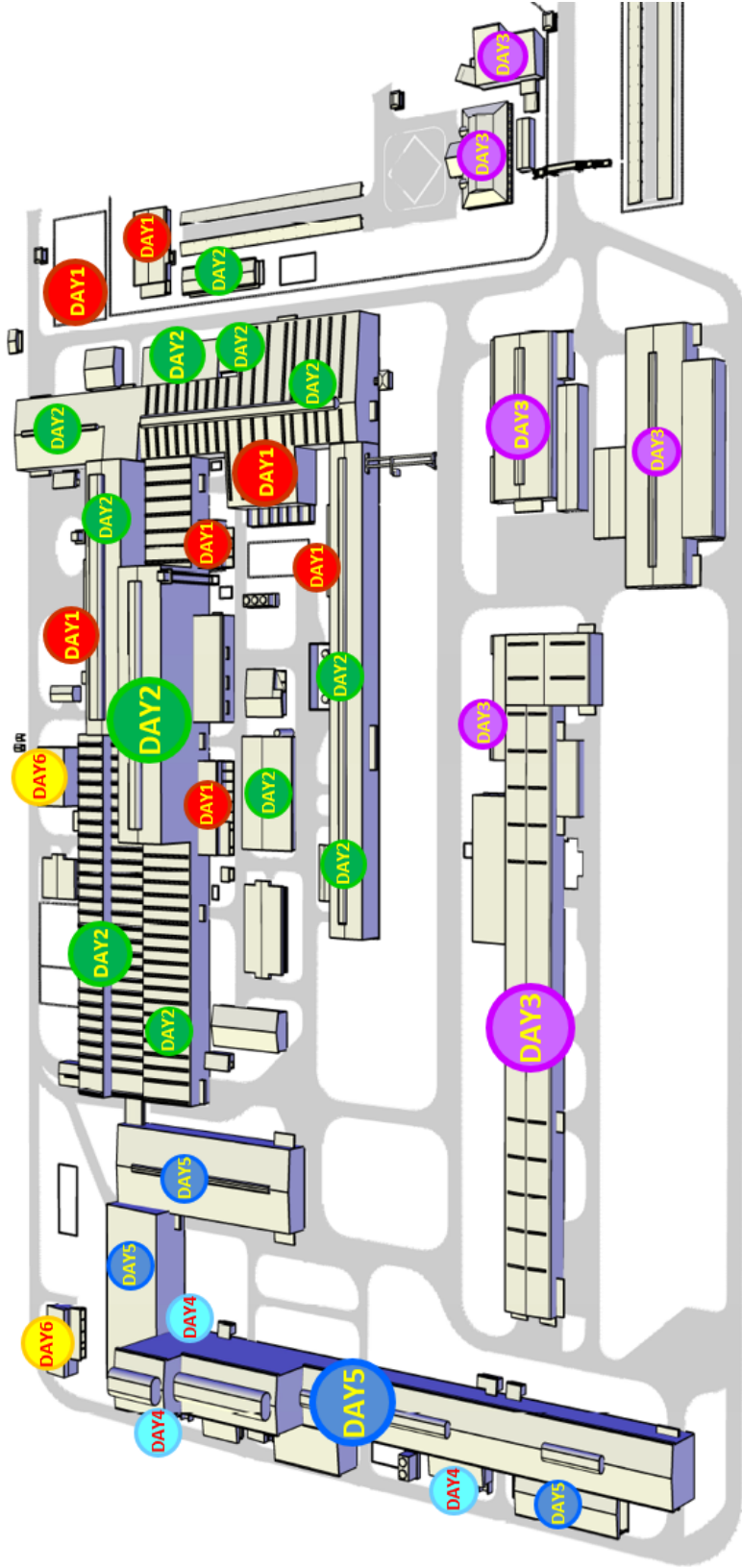
This message was sent with High importance.

Tue 24-Oct-23 8:49 AM

### Schedule plan for test fire alarm & fire protection system

Day 1 (26 OCTOBER 2023)	
09.00	12.00 Test Fire protection EER.CRM, EER.PKL
12.00	12.30 Test Fire protection Server Room (Support Building)
12.30	13.00 Test Fire alarm at Support building
13.00	15.00 Test Fire protection EER.MCL1
15.00	17.00 Test Fire protection EER.MCL2 (Entry, Main EER.)
Day 2 (27 OCTOBER 2023)	
09.00	12.00 Test Fire alarm at MCL2
12.00	12.30 Test Fire alarm at Operation building
12.30	13.00 Test Fire alarm at Amenity building
13.00	14.00 Test Fire alarm at PKL, Work shop, Warehouse
14.00	15.00 Test Fire alarm at CRM, Roll shop, Canteen
15.00	16.00 Test Fire alarm at MCL1
16.00	16.30 Test Fire alarm at CPL, WWTP
16.30	17.00 Test Fire alarm at Finished Storage Warehouse
Day 3 (28 OCTOBER 2023)	
09.00	10.00 Test Fire alarm at Smarttruss factory
10.00	12.00 Test Fire alarm at Purlin building
12.00	12.30 Test Fire alarm at Admin building
12.30	13.00 Test Fire alarm at Training Center
13.00	15.00 Test Fire alarm at Roof & Wall Factory
15.00	17.00 Flush out the pipe of fire hydrant at Roof & Wall Factory
Day 4 (30 OCTOBER 2023)	
09.00	12.00 Test Fire protection EER.MCL3 (Entry, Main EER.)
12.00	12.30 Test Fire alarm at LAB (MCL3)
13.00	17.00 Test Fire protection EER.MCL3 (Entry, Main EER.)
Day 5 (31 OCTOBER 2023)	
09.00	12.00 Test Fire alarm at MCL3
12.30	13.00 Test Fire alarm at WWTP (MCL3)
13.00	15.00 Test Fire alarm at MCL3
15.00	17.00 Test Fire alarm at Gambling Warehouse
Day 6 (1 NOVEMBER 2023)	
09.00	12.00 Test flow rate hydrant & hose reel of Fire Water System MCL1
13.00	17.00 Test flow rate hydrant & hose reel of Fire Water System MCL3

"Please pass to those who can not access an email"







***NS BLUE SCOPE STEEL (THAILAND) LTD. ( MCL3 )***

***Preventive Maintenance for Fire Protection System***

***On July 2023***

---

## INSPECTION, TEST AND PREVENTIVE MAINTENANCE FOR Fire Protection and Fire Detection System

Customer : NS Blue Scope Steel Thailand (MCL 3)

Report Date : 9 August 2023

Inspector By :	1. Subin	Karnna	Service Leader
	2. Pattanasit	Ratanapatarakorn	Technician Service
	3. Somkhid	Khamlai	Technician Service
	4. Anuchit	Phoommee	Technician Service
	5. Kittiphop	Patchamat	Technician Service

Reported By



---

**Mr. Chalermchai Soontornpanaves**

**Fire Service Manager**

**Takachiho Fire, Security & Services (Thailand) Ltd.**

Item	Inspection Description	Point / Device		Location	Recomment	Priority		Status
1	Fire alarm system ( Monthly )	M3-98	Heat Detector	Chemical area/WAST WATER TREATMENT14	Damage	Low	Medium	TK เสนอราคา
			Strobe light = 2 ea	Packing pulpit, EER wet water	อุปกรณ์เสีย	Low	Medium	TK เสนอราคามาแล้ว
		MCL 3	Back-up batteries = 4 ea (12 V/7.5 Ah)	power supply fire alarm control panel no.1, 2	Battery deterioration	Low	Medium	แก้ไขแล้ว
								Before After
		MCL 3	Back-up batteries = 2 ea (12 V/42 Ah)	control fire alarm	Battery deterioration	Low	Medium	
2	Inergen and Inergen cylinder system ( Monthly )	MCL 3	LED	EXIT EER- Room	LED สำหรับ Inergen gas discharger (สำหรับชุด OP118) สายขั้วต่อสกปรก	Low	Medium	TK เสนอราคา
		MCL 3	Key Lock	Exit EER	Key lock สำหรับ ตู้ manual release ขั้วชุด 2 ตู้	Low	Medium	
		No. 14104797, 14104111	ถัง Inergen	MCL3 Exit EER Room	Low Pressure	Low	Medium	
3	Automatic sprinkler & Deluge valve system ( Monthly )							
			Function system is working normally.					
4	Fire Hydrant and Fire Hose Cabinet ( Monthly )	Fire Hydrant						
		No. 3	Via	MCL3	สภาพท่อถูกตีควมเป็นสนิม	Low	Medium	TK เสนอราคา
5	Fire pump system ( Monthly )							
			Function system is working normally.					
6	Portable Extinguisher ( Every Three Months )							
			Function system is working normally.					
7	Emergency light & Exit light ( Every One Months )							
			Emergency light					
		No. 2, 3, 22, 39, 46	อุปกรณ์เสีย = 5 ea	BH 5, BF 5, BC 32, BC 4-2, PULPIT GAMLING	อุปกรณ์เสีย ( Max 12 V/7.5 Ah )	Low	Medium	TK เสนอราคา

Reference report: TAKACHHO's Inspection Monthly report for NS Bluescope Thailand : July 2023

Review By

Songpon Soontaros  
PSV Senior Engineer

Date

Sign Off By

Plant Service & Engineering Project Manager

Date

# **FIRE ALARM SYSTEM**

## Preventive Maintenance Check Sheet (Monthly/Quarterly)

### Fire Detection and Alarm System

Subject : PM. FIRE ALARM SYSTEM

Client : NS BLUE SCOPE STEEL (THAILAND) LTD. ( MCL3 )

REF.Contract NO : 24 time / 2 year

Inspection Date : 29 - 31 July 2023

Inspector : Subin, Pattanasit, Somkid, Anuchit, Kittiphop

Witness : Khun Songpon, Khun Sonthaya

Location of fire alarm control panel : MCL 3 , SIMPLEX 4100 ES [NODE 5]

Description	Result	Remark
<b>1. Fire Alarm Control Panel</b>		
1.1 Check condition of fuse control	Y	
1.2 Check condition of Lamp & LEDs	Y	
1.3 Check power supply for FCP	Y	
1.4 Check cable connection / terminal	Y	
1.5 Check Alarm Condition / Function	Y	
1.6 Visual check condition of battery and housing of battery	Y	
1.7 Cleaning of FCP	Y	
<b>2. Annunciator Panel</b>		
2.1 Check condition of fuse control	Y	
2.2 Check condition of Lamp & LEDs	Y	
2.3 Check power supply for FCP	Y	
2.4 Check cable connection / terminal	Y	
2.5 Check Alarm Condition / Function Test	Y	
2.6 Visual check condition of battery and housing of battery	Y	
2.7 Cleaning of Annunciator Panel	Y	

Y = Satisfactory N = Unsatisfactory N/A = Not Applicable

Remark : AC POWER 226.0 VAC

Charger control panel 26.50 VDC

Battery back up 26.48 VDC ( start 29/5/21 )

\* Power supply panel box no.1

\* Power supply panel box no.2

AC power supply : 227.6 VAC

AC power supply : 227.8 VAC

Battery back up : 27.24 Vdc. (Start 3/8/23)

Battery back up : 27.25 Vdc. (Start 3/8/23)

Charge control : 27.23 Vdc.

Charge control : 27.20 Vdc.

\* Heat detector point M3-1, M3-10, M3-98 อุปกรณ์ (เสีย)

\* Strobe light ที่ห้อง Packing pulpit และ ห้อง EER west water อุปกรณ์เสีย 2 จำนวน ตัว

\* Batter back up สำหรับตู้ control fire alarm อายุการใช้งานเกินมาตรฐาน 2 ปี จำนวน 2 ea (12 V/42 Ah)

**TAKACHIHO**

## Preventive Maintenance Check Sheet

### Fire Detection and Alarm System

**Subject :** PM. FIRE ALARM SYSTEM

**Client :** NS BLUE SCOPE STEEL (THAILAND) LTD. ( MCL3 )

**REF.Contract NO :** 24 time / 2 year

**Inspection Date :** 29 - 31 July 2023

**Inspector :** Subin, Pattanasit, Somkid, Anuchit, Kittiphop

**Witness :** Khun Songpon, Khun Sonthaya

**Location of fire alarm control panel :** MCL 3 , SIMPLEX 4100 ES [NODE 5]

item	Location	LOOP/ Zone.Number	Type	Inspection Result	Test Result	Remark
1	MCL-3 PLC EER. Z1. INERGEN	M3-76	IAM(Inergen Alarm)	Y	Y	
2	MCL-3 PLC EER. INERGEN DISCHARGE	M3-77	IAM(Inergen Discharge)	Y	Y	
3	MCL-3 PLC EER. INERGEN TROUBLE	M3-78	IAM(Inergen Trouble)	Y	Y	
4	MCL-3 EXIT EER. Z1. INERGEN	M3-71	IAM(Inergen Alarm)	Y	Y	
5	MCL-3 EXIT EER. Z1. INERGEN	M3-72	IAM(Inergen Discharge)	Y	Y	
6	MCL-3 EXIT EER. Z1. INERGEN	M3-73	IAM(Inergen Trouble)	Y	Y	
7	MCL-3 MV EER. Z1 INERGEN ALARM	M3-83	IAM(Inergen Alarm)	Y	Y	
8	MCL-3 MV EER. Z1. INERGEN DISCHARGE	M3-84	IAM(Inergen Discharge)	Y	Y	
9	MCL-3 MV EER. Z1. INERGEN TROUBLE	M3-85	IAM(Inergen Trouble)	Y	Y	
10	MCL-3 MV EER. Z1.	M3-79	MANUAL	Y	Y	
11	MCL-3 MV EER. Z1. NO. 1	M3-81	SMOKE	Y	Y	
12	MCL-3 MV EER. Z1. NO. 2	M3-82	SMOKE	Y	Y	
13	MCL-3 EXIT EER. Z1. NO. 2	M3-66	MANUAL	Y	Y	
14	MCL-3 EXIT EER. Z1. NO. 3	M3-65	SMOKE	Y	Y	
15	MCL-3 EXIT EER. Z1. NO. 2	M3-64	SMOKE	Y	Y	
16	MCL-3 EXIT EER. Z1. NO. 1	M3-63	SMOKE	Y	Y	
17	MCL-3 EXIT EER. Z1. NO. 4	M3-68	SMOKE	Y	Y	
18	MCL-3 EXIT EER. Z1. NO. 1	M3-61	MANUAL	Y	Y	
19	MCL-3 EXIT EER. Z1. NO. 5	M3-69	SMOKE	Y	Y	
20	MCL-3 PLC EER. Z1. NO. 2	M3-75	SMOKE	Y	Y	
21	MCL-3 PLC EER. Z1. NO. 1	M3-74	SMOKE	Y	Y	
22	MCL-3 POT EER. Z7. INERGEN	M3-48	IAM(Inergen Trouble)	Y	Y	
23	MCL-3 POT EER. Z7. INERGEN	M3-46	IAM(Inergen Alarm)	Y	Y	
24	MCL-3 POT EER. Z7. INERGEN	M3-47	IAM(Inergen Discharge)	Y	Y	
25	MCL-3 POT EER. Z7. NO.2	M3-45	SMOKE	Y	Y	
26	MCL-3 POT EER. Z7. NO.1	M3-44	SMOKE	Y	Y	
27	MCL-3 POT EER. Z7.	M3-42	MANUAL	Y	Y	
28	MCL-3 ENTRY EER. Z2.	M3-31	IAM(Inergen Alarm)	Y	Y	
29	MCL-3 ENTRY EER. Z2.	M3-32	IAM(Inergen Discharge)	Y	Y	
30	MCL-3 ENTRY EER. Z2.	M3-33	IAM(Inergen Trouble)	Y	Y	

Y = Satisfactory N = Unsatisfactory N/A = Not Applicable

Remark: \_\_\_\_\_  
 \_\_\_\_\_

## Preventive Maintenance Check Sheet

### Fire Detection and Alarm System

**Subject : PM. FIRE ALARM SYSTEM**

**Client : NS BLUE SCOPE STEEL (THAILAND) LTD. ( MCL3 )**

**REF.Contract NO : 24 time / 2 year**

**Inspection Date : 29 - 31 July 2023**

**Inspector : Subin, Pattanasit, Somkid, Anuchit, Kittiphop**

**Witness : Khun Songpon, Khun Sonthaya**

**Location of fire alarm control panel : MCL 3 , SIMPLEX 4100 ES [NODE 5]**

item	Location	LOOP/ Zone.Number	Type	Inspection Result	Test Result	Remark
31	MCL-3 ENTRY EER. Z2. NO.2	M3-29	MANUAL	Y	Y	
32	MCL-3 ENTRY EER. Z2. NO.1	M3-21	SMOKE DETECTOR	Y	Y	
33	MCL-3 ENTRY EER. Z2. NO.2	M3-22	SMOKE DETECTOR	Y	Y	
34	MCL-3 ENTRY EER. Z2. NO.3	M3-23	SMOKE DETECTOR	Y	Y	
35	MCL-3 WATER TREATMENT Z8.	M3-19	MANUAL	Y	Y	
36	MCL-3 WATER TREATMENT Z8.	M3-8	MANUAL	Y	Y	
37	MCL-3 Z6 MANUAL (GRID 34/BC)	M1-1	MANUAL	Y	Y	
38	MCL-3 Z6 MANUAL (GRID 31/BC)	M1-10	MANUAL	Y	Y	
39	MCL-3 Z6 MANUAL (GRID 31/BC)	M1-49	MANUAL	Y	Y	
40	MCL-3 Z6 MANUAL (GRID 34/BC)	M1-45	MANUAL	Y	Y	
41	MCL-3 Z6 MANUAL (GRID 26/BC)	M1-19	MANUAL	Y	Y	
42	MCL-3 Z6 MANUAL (GRID 21/BC)	M1-23	MANUAL	Y	Y	
43	MCL-3 Z5 MANUAL (GRID 18/BC)	M1-29	MANUAL	Y	Y	
44	MCL-3 Z7 MANUAL (GRID 17/BC)	M3-118	MANUAL	Y	Y	
45	MCL-3 Z5 MANUAL (GRID 13/BC)	M1-39	MANUAL	Y	Y	
46	MCL-3 POT PUPIT Z5.	M3-86	MANUAL	Y	Y	
47	MCL-3 POT PUPIT Z5.	M3-60	SMOKE DETECTOR	Y	Y	
48	MCL-3 POT PUPIT Z5.	M3-59	SMOKE DETECTOR	Y	Y	
49	MCL-3 POT PUPIT Z5.	M1-77	MANUAL	Y	Y	
50	MCL-3 POT PUPIT Z5.	M1-75	MANUAL	Y	Y	
51	MCL-3 POT PUPIT Z5.	M1-41	MANUAL	Y	Y	
52	MCL-3 CHEMICAL AREA	M3-100	MANUAL	Y	Y	
53	MCL-3 COATING OP114	M2-1	MANUAL	Y	Y	
54	MCL-3 MANUAL Z. 4	M2-22	MANUAL	Y	Y	
55	MCL-3 MANUAL Z. 4	M2-10	MANUAL	Y	Y	
56	MCL-3 MANUAL Z. 4	M2-14	MANUAL	Y	Y	
57	MCL-3 EXIT PULPIT Z. 4	M2-60	MANUAL	Y	Y	
58	MCL-3 EXIT PULPIT Z. 4	M2-61	SMOKE DETECTOR	Y	Y	
59	MCL-3 MANUAL Z. 4	M2-30	MANUAL	Y	Y	
60	MCL-3 MANUAL Z. 4	M2-38	MANUAL	Y	Y	

Y = Satisfactory N = Unsatisfactory N/A = Not Applicable

Remark: \_\_\_\_\_

## Preventive Maintenance Check Sheet

### Fire Detection and Alarm System

**Subject :** PM. FIRE ALARM SYSTEM

**Client :** NS BLUE SCOPE STEEL (THAILAND) LTD. ( MCL3 )

**REF.Contract NO :** 24 time / 2 year

**Inspection Date :** 29 - 31 July 2023

**Inspector :** Subin, Pattanasit, Somkid, Anuchit, Kittiphop

**Witness :** Khun Songpon, Khun Sonthaya

**Location of fire alarm control panel :** MCL 3 , SIMPLEX 4100 ES [NODE 5]

item	Location	LOOP/ Zone.Number	Type	Inspection Result	Test Result	Remark
61	MCL-3 MANUAL Z. 5	M2-44	MANUAL	Y	Y	
62	MCL-3 WET LAB Z. 5	M2-41	SMOKE DETECTOR	Y	Y	
63	MCL-3 WET LAB Z. 5	M2-40	MANUAL	Y	Y	
64	MCL-3 MANUAL Z. 5	M1-83	MANUAL	Y	Y	
65	MCL-3 PIT 6 Z. 11	M3-57	MANUAL	Y	Y	
66	MCL-3 PIT 6 Z. 11	M3-55	MANUAL	Y	Y	
67	MCL-3 MANUAL Z. 6	M1-12	MANUAL	Y	Y	
68	MCL-3 MAMUAL Z. 6	M1-53	MANUAL	Y	Y	
69	MCL-3 ENTRY PULPIT Z. 6	M1-55	MANUAL	Y	Y	
70	MCL-3 ENTRY PULPIT Z. 6	M1-56	SMOKE DETECTOR	Y	Y	
71	MCL-3 MANUAL Z. 6	M1-65	MANUAL	Y	Y	
72	MCL-3 MANUAL Z. 6	M1-67	MANUAL	Y	Y	
73	MCL-3 PAINT COATER FL.1	M2-56	MANUAL	Y	Y	
74	MCL-3 PAINT COATER FL.1	M2-57	SMOKE DETECTOR	Y	Y	
75	MCL-3 PAINT COATER FL.2	M2-58	MANUAL	Y	Y	
76	MCL-3 PAINT COATER FL.2	M2-59	SMOKE DETECTOR	Y	Y	
77	MCL-3 PIT 7 Z. 12	M2-54	MANUAL	Y	Y	
78	MCL-3 PIT 7 Z. 12	M2-50	MANUAL	Y	Y	
79	MCL-3 packing pulpit	M2-28	MANUAL	Y	Y	
80	MCL-3 packing pulpit	M2-29	SMOKE DETECTOR	Y	Y	
81	MCL-3 Meeting room	M1-63	SMOKE DETECTOR	Y	Y	
82	MCL-3 Meeting room	M1-64	SMOKE DETECTOR	Y	Y	
83	MCL-3 pit 6 somke 1	M3-53	SMOKE DETECTOR	Y	Y	
84	MCL-3 pit 6 somke 2	M3-54	SMOKE DETECTOR	Y	Y	
85	MCL-3 pit 7 somke 1	M2-52	SMOKE DETECTOR	Y	Y	
86	MCL-3 pit 7 somke 2	M2-53	SMOKE DETECTOR	Y	Y	
87	Wast water treatment 4	M3-4	HEAT DETECTOR	Y	Y	
88	Wast water treatment 5	M3-5	HEAT DETECTOR	Y	Y	
89	Wast water treatment 9	M3-11	HEAT DETECTOR	Y	Y	
90	Wast water treatment 10	M3-12	HEAT DETECTOR	Y	Y	

Y = Satisfactory N = Unsatisfactory N/A = Not Applicable

Remark: \_\_\_\_\_  
 \_\_\_\_\_

## Preventive Maintenance Check Sheet

### Fire Detection and Alarm System

**Subject :** PM. FIRE ALARM SYSTEM

**Client :** NS BLUE SCOPE STEEL (THAILAND) LTD. ( MCL3 )

**REF.Contract NO :** 24 time / 2 year

**Inspection Date :** 29 - 31 July 2023

**Inspector :** Subin, Pattanasit, Somkid, Anuchit, Kittiphop

**Witness :** Khun Songpon, Khun Sonthaya

**Location of fire alarm control panel :** MCL 3 , SIMPLEX 4100 ES [NODE 5]

item	Location	LOOP/ Zone.Number	Type	Inspection Result	Test Result	Remark
91	Wast water treatment 11	M3-13	HEAT DETECTOR	Y	Y	
92	Wast water treatment 12	M3-16	HEAT DETECTOR	Y	Y	
93	WWT LAB pulpit	M3-124	SMOKE DETECTOR	Y	Y	
94	WWT LAB pulpit	M3-125	MANUAL	Y	Y	
95	WWT LAB CTRL pulpit	M3-126	SMOKE DETECTOR	Y	Y	
96	WWT LAB CTRL pulpit	M3-127	MANUAL	Y	Y	
97	Wast water treatment	M3-7	HEAT DETECTOR	Y	Y	
98	Wast water treatment	M3-3	HEAT DETECTOR	Y	Y	
99	Wast water treatment	M3-17	HEAT DETECTOR	Y	Y	
100	Wast water treatment	M3-18	HEAT DETECTOR	Y	Y	
101	MCL-3 pit 5 Zone 10 manual	M1-87	MANUAL	N/A	N/A	เข้าพื้นที่ไม่ได้
102	MCL-3 pit 5 Zone 10 manual	M1-90	MANUAL	N/A	N/A	เข้าพื้นที่ไม่ได้
103	MCL-3 Generator z. 7 heat 1	M3-49	HEAT DETECTOR	Y	Y	
104	MCL-3 Generator z. 7 heat 2	M3-50	HEAT DETECTOR	Y	Y	
105	MCL-3 Chemical area	M3-94	HEAT DETECTOR	Y	Y	
106	MCL-3 Chemical area	M3-95	HEAT DETECTOR	Y	Y	
107	MCL-3 Chemical area	M3-96	HEAT DETECTOR	Y	Y	
108	MCL-3 Chemical area	M3-97	HEAT DETECTOR	Y	Y	
109	MCL-3 Chemical area	M3-98	HEAT DETECTOR	N	N	อุปกรณ์เสีย
110	MCL-3 Chemical area	M3-99	HEAT DETECTOR	Y	Y	
111	MCL3 Fire pump house	M3-87	HEAT DETECTOR	Y	Y	
112	MCL3 Fire pump house	M3-88	HEAT DETECTOR	Y	Y	
113	MCL3 Fire pump house	M3-89	HEAT DETECTOR	Y	Y	
114	MCL3 Fire pump house	M3-90	MANUAL	Y	Y	
115	MCL3 Toilet 1	M1-57	HEAT DETECTOR	Y	Y	
116	MCL3 Toilet 1	M1-58	HEAT DETECTOR	Y	Y	
117	MCL3 Toilet 2	M2-48	HEAT DETECTOR	Y	Y	
118	MCL3 Toilet 2	M2-49	HEAT DETECTOR	Y	Y	
119	MCL3 Toilet 3	M2-24	HEAT DETECTOR	Y	Y	
120	MCL3 Toilet 3	M2-25	HEAT DETECTOR	Y	Y	

Y = Satisfactory N = Unsatisfactory N/A = Not Applicable

Remark: \_\_\_\_\_  
 \_\_\_\_\_

## Preventive Maintenance Check Sheet

### Fire Detection and Alarm System

**Subject : PM. FIRE ALARM SYSTEM**

**Client : NS BLUE SCOPE STEEL (THAILAND) LTD. ( MCL3 )**

**REF.Contract NO : 24 time / 2 year**

**Inspection Date : 29 - 31 July 2023**

**Inspector : Subin, Pattanasit, Somkid, Anuchit, Kittiphop**

**Witness : Khun Songpon, Khun Sonthaya**

**Location of fire alarm control panel : MCL 3 , SIMPLEX 4100 ES [NODE 5]**

item	Location	LOOP/ Zone.Number	Type	Inspection Result	Test Result	Remark
121	MCL3 DV-LISTED ZONE 1	M1-5	Supervisory valve	Y	Y	
122	MCL3 DV-LISTED ZONE 2	M1-48	Supervisory valve	Y	Y	
123	MCL3 DV-LISTED ZONE 3	M1-9	Supervisory valve	Y	Y	
124	MCL3 DV-LISTED ZONE 4	M1-52	Supervisory valve	Y	Y	
125	MCL3 DV-LISTED ZONE 5	M1-15	Supervisory valve	Y	Y	
126	MCL3 DV-LISTED ZONE 6	M1-62	Supervisory valve	Y	Y	
127	MCL3 DV-LISTED ZONE 7	M1-26	Supervisory valve	Y	Y	
128	MCL3 DV-LISTED ZONE 8	M1-70	Supervisory valve	Y	Y	
129	MCL3 DV-LISTED ZONE 9	M1-28	Supervisory valve	Y	Y	
130	MCL3 DV-LISTED ZONE 10	M1-74	Supervisory valve	Y	Y	
131	MCL3 DV-LISTED ZONE 11	M1-38	Supervisory valve	Y	Y	
132	MCL3 DV-LISTED ZONE 12	M1-82	Supervisory valve	Y	Y	
133	MCL3 DV-LISTED ZONE 13	M1-44	Supervisory valve	Y	Y	
134	MCL3 DV-LISTED ZONE 14	M2-86	Supervisory valve	Y	Y	
135	MCL3 DV-LISTED ZONE 15	M2-9	Supervisory valve	Y	Y	
136	MCL3 DV-LISTED ZONE 16	M2-37	Supervisory valve	Y	Y	
137	MCL3 DV-LISTED ZONE 17	M2-13	Supervisory valve	Y	Y	
138	MCL3 DV-LISTED ZONE 18	M2-35	Supervisory valve	Y	Y	
139	MCL3 DV-LISTED ZONE 19	M2-17	Supervisory valve	Y	Y	
140	MCL3 DV-LISTED ZONE 20	M2-33	Supervisory valve	Y	Y	
141	MCL3 DV-LISTED ZONE 21	M2-21	Supervisory valve	Y	Y	
142	MCL3 DV-LISTED ZONE 22	M3-121	Supervisory valve	Y	Y	
143	MCL3 DV-LISTED ZONE 23	M3-123	Supervisory valve	Y	Y	
144	MCL3 AV-LISLED 01	M3-15	Supervisory valve	Y	Y	
145	MCL3 AV-LISLED 02	M3-52	Supervisory valve	Y	Y	
146	MCL3 AV-LISLED 03	M3-129	Supervisory valve	Y	Y	
147	MCL-3 ENTRY EER. Z2. NO.1	M3-24	MANUAL	Y	Y	
148	MCL-3 ENTRY EER. Z2. NO.4	M3-26	SMOKE DETECTOR	Y	Y	
149	MCL-3 ENTRY EER. Z2. NO.5	M3-27	SMOKE DETECTOR	Y	Y	
150	MCL-3 ENTRY EER. Z2. NO.6	M3-28	SMOKE DETECTOR	Y	Y	

Y = Satisfactory N = Unsatisfactory N/A = Not Applicable

Remark: \_\_\_\_\_  
 \_\_\_\_\_

## Preventive Maintenance Check Sheet

### Fire Detection and Alarm System

**Subject : PM. FIRE ALARM SYSTEM**

**Client : NS BLUE SCOPE STEEL (THAILAND) LTD. ( MCL3 )**

**REF.Contract NO : 24 time / 2 year**

**Inspection Date : 29 - 31 July 2023**

**Inspector : Subin, Pattanasit, Somkid, Anuchit, Kittiphop**

**Witness : Khun Songpon, Khun Sonthaya**

**Location of fire alarm control panel : MCL 3 , SIMPLEX 4100 ES [NODE 5]**

[illegible]

Y = Satisfactory N = Unsatisfactory N/A = Not Applicable

Remark: \_\_\_\_\_

## Preventive Maintenance Check Sheet (Monthly/Quarterly) Fire Detection and Alarm System

Subject : PM. FIRE ALARM SYSTEM

Client : NS BLUE SCOPE STEEL (THAILAND) LTD. ( MCL3 )

REF.Contract NO : 24 time / 2 year

Inspection Date : 29 - 31 July 2023

Inspector : Subin, Pattanasit, Somkid, Anuchit, Kittiphop

Witness : Khun Songpon, Khun Sonthaya

Location of fire alarm control panel : MCL-3 GAMLING, NOTIFIER ( RP-1001 )

Description	Normal Status	Result	Remark
<b>1. Fire Alarm Control Panel</b>			
1.1 Check condition of fuse control	S	S	
1.2 Check condition of Lamp & LEDs	S	S	
1.3 Check power supply for FCP	S	S	
1.4 Check cable connection / terminal	S	S	
1.5 Check Alarm Condition / Function Test	S	S	
1.6 Visual check condition of battery and housing of battery	S	S	
1.7 Cleaning of FCP	S	S	
<b>2. Annunciator Panel</b>			
2.1 Check condition of fuse control	N/A	N/A	
2.2 Check condition of Lamp & LEDs	N/A	N/A	
2.3 Check power supply for FCP	N/A	N/A	
2.4 Check cable connection / terminal	N/A	N/A	
2.5 Check Alarm Condition / Function Test	N/A	N/A	
2.6 Visual check condition of battery and housing of battery	N/A	N/A	
2.7 Cleaning of Annunciator Panel	N/A	N/A	

S = Satisfactory US = Unsatisfactory N/A = Not Applicable

Remark : AC Power 228.6 VAC

Charger control panel 27.39 V.dc (Start 1/6/23)

Battery back up 27.36 V.dc

\* แนะนำ ควรเพิ่ม signal alarm module เพื่อส่งสัญญาณ alarm เข้า main control panel fire alarm

TAKACHIHO



**TAKACHIHO**  
**FIRE, SECURITY & SERVICES (THAILAND) LTD.**

**Takachiho Fire, Security & Services (Thailand) Ltd.**

1858/110-111 Interlink Tower Bangna 25 Fl.,

*Debaratna Road, Bangna Tai, Bangna,*

Bangkok 10260, Thailand.

Telephone no. : 02-366 -9000

*Facsimile no. : 02-366-9090*

[www.tkfs.co.th](http://www.tkfs.co.th)

## Preventive Maintenance Check Sheet

### Fire Detection and Alarm System

**Subject : PM. FIRE ALARM SYSTEM**

**Client : NS BLUE SCOPE STEEL (THAILAND) LTD. ( MCL3 )**

**REF.Contract NO : 24 time / 2 year**

**Inspection Date : 29 - 31 July 2023**

**Inspector : Subin, Pattanasit, Somkid, Anuchit, Kittiphop**

**Witness : Khun Songpon, Khun Sonthaya**

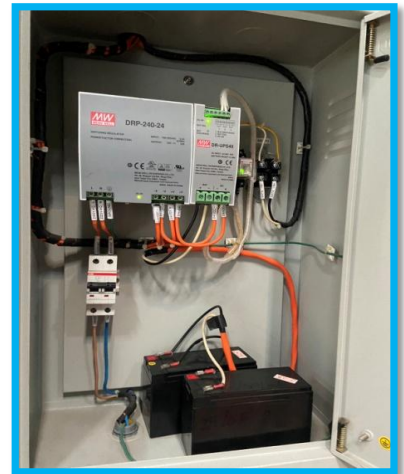
**Location of fire alarm control panel : MCL-3 GAMLING, NOTIFIER ( RP-1001 )**

[illegible]

Y = Satisfactory N = Unsatisfactory N/A = Not Applicable

Remark: \_\_\_\_\_

## เปลี่ยน Battery Power Supply Fire Alarm



## **INERGEN SYSTEM**

## Preventive Maintenance Check Sheet

### Fire suppression system

Subject : PM. Fire Suppression System (Inergen)  
 Client : NS BLUE SCOPE STEEL (THAILAND) LTD. ( MCL3 )  
 REF.Contract NO : 24 time / 2 year  
 Inspection Date : 29 - 31 July 2023  
 Inspector : Subin, Pattanasit, Somkid, Anuchit, Kittiphop  
 Witness : Khun Songpon, Khun Sonthaya

Location of fire alarm control panel : MCL-3 ENTRY EER. ROOM AUTOPLUS 542R (RCP-01)

Description	Status	Function test Result	Remark
<b>Electrical system</b>			
<b>1. Releasing Control Panel</b>	Y	Y	
1.1 Check condition of fuse control	Y	Y	
1.2 Check condition of Lamp & LEDs	Y	Y	
1.3 Check power supply for RCP and battery	Y	Y	
1.4 Check cable connection / terminal	Y	Y	
1.5 Check Alarm Condition / Function Test	Y	Y	
1.6 Visual check condition of battery and housing of battery	Y	Y	
1.7 Cleaning of RCP	Y	Y	
<b>2. Equipment</b>			
2.1 Check condition of all detector and function test zone by zone	Y	Y	
2.2 Cross zone function test of detector	Y	Y	
2.3 Check condition of all manual release	Y	Y	
2.4 Check condition of solenoid and function test	Y	Y	
2.5 Check condition of all abort switch and function test	Y	Y	
2.6 Check cable connection / terminal	Y	Y	
2.7 Visual check selector valve and function test	Y	Y	
2.8 Check condition of all alarm device and tested	Y	Y	
<b>3. Mechanical</b>			
3.1 Check pipe system and nozzle for physical damage.	Y	Y	
3.2 Check condition of flexible hose	Y	Y	
3.3 Check condition of cylinder	Y	Y	

Y = Satisfactory N = Unsatisfactory N/A = Not Applicable

Remark : AC Power 229.2 VAC

Charger control panel 27.40 V.dc

Battery back up 27.38 V.dc (Start using 3/11/2021)

**TAKACHIHO**

## Preventive Maintenance Check Sheet

### Fire suppression system

Subject : PM. Fire Suppression System (Inergen)

Client : NS BLUE SCOPE STEEL (THAILAND) LTD. ( MCL3 )

REF.Contract NO : 24 time / 2 year

Inspection Date : 29 - 31 July 2023

Inspector : Subin, Pattanasit, Somkid, Anuchit, Kittiphop

Witness : Khun Songpon, Khun Sonthaya

Location of fire alarm control panel : MCL-3 ENTRY EER. ROOM AUTOPLUS 542R (RCP-01)

item	Location	Zone.Number	Type	Test Result	Test trouble signal FCP	Remark
1	ENTRY EER. ROOM	ZONE.1	SMOKE.1	Y	Y	cross zone detector to discharge 60 sec.
2	ENTRY EER. ROOM	ZONE.2	SMOKE.2	Y	Y	
3	ENTRY EER. ROOM	ZONE.1	SMOKE.1	Y	Y	
4	ENTRY EER. ROOM	ZONE.2	SMOKE.2	Y	Y	
5	ENTRY EER. ROOM	ZONE.1	SMOKE.1	Y	Y	
6	ENTRY EER. ROOM	ZONE.2	SMOKE.2	Y	Y	
7	ENTRY EER. ROOM	ZONE.1	SMOKE.1	Y	Y	
8	ENTRY EER. ROOM	ZONE.2	SMOKE.2	Y	Y	
9	ENTRY EER. ROOM	ZONE.1	SMOKE.1	Y	Y	
10	ENTRY EER. ROOM	ZONE.2	SMOKE.2	Y	Y	
11	ENTRY EER. ROOM	ZONE.1	SMOKE.1	Y	Y	
12	ENTRY EER. ROOM	ZONE.2	SMOKE.2	Y	Y	
13	ENTRY EER. ROOM	ZONE.3	MANUAL.1	Y	Y	Immediately
14	ENTRY EER. ROOM	ZONE.3	MANUAL.2	Y	Y	"
15	ENTRY EER. ROOM	ZONE.3	MANUAL.3	Y	Y	"
16	ENTRY EER. ROOM	ZONE.4	ABORT SW.1	Y	Y	Original time
17	ENTRY EER. ROOM	ZONE.4	ABORT SW.2	Y	Y	"
18	ENTRY EER. ROOM	ZONE.4	ABORT SW.3	Y	Y	"
19	ENTRY EER. ROOM	NAC.1	KEY SW.	Y	Y	
20	ENTRY EER. ROOM	NAC.2	ALARM BELL	Y	Y	
21	ENTRY EER. ROOM	NAC.3	STROBE/HORN	Y	Y	
22	ENTRY EER. ROOM	ZONE.5	PRESSURE SW.	Y	Y	
23	ENTRY EER. ROOM	NAC.1	SOLENOID VALVE	Y	Y	
24	ENTRY EER. ROOM		SHUTDOWN AIR	Y	Y	First alarm to shutdown air

Y = Satisfactory N = Unsatisfactory N/A = Not Applicable

Remark : The function test detector system working is properly

\* Somke detector cross zone delay times 60 sec.

\* Abort switch push to original time 60 sec.

\* Manual release push to immediately

## Preventive Maintenance Check Sheet

### Fire suppression system

Subject : PM. Fire Suppression System (Inergen)  
 Client : NS BLUE SCOPE STEEL (THAILAND) LTD. ( MCL3 )  
 REF.Contract NO : 24 time / 2 year  
 Inspection Date : 29 - 31 July 2023  
 Inspector : Subin, Pattanasit, Somkid, Anuchit, Kittiphop  
 Witness : Khun Songpon, Khun Sonthaya

Location of fire alarm control panel : MCL-3 POT EER. ROOM AUTOPLUS 542R (RCP-02)

Description	Status	Function test Result	Remark
<b>Electrical system</b>			
<b>1. Releasing Control Panel</b>			
1.1 Check condition of fuse control	Y	Y	
1.2 Check condition of Lamp & LEDs	Y	Y	
1.3 Check power supply for RCP and battery	Y	Y	
1.4 Check cable connection / terminal	Y	Y	
1.5 Check Alarm Condition / Function Test	Y	Y	
1.6 Visual check condition of battery and housing of battery	Y	Y	
1.7 Cleaning of RCP	Y	Y	
<b>2. Equipment</b>			
2.1 Check condition of all detector and function test zone by zone	Y	Y	
2.2 Cross zone function test of detector	Y	Y	
2.3 Check condition of all manual release	Y	Y	
2.4 Check condition of solenoid and function test	Y	Y	
2.5 Check condition of all abort switch and function test	Y	Y	
2.6 Check cable connection / terminal	Y	Y	
2.7 Visual check selector valve and function test	Y	Y	
2.8 Check condition of all alarm device and tested	Y	Y	
<b>3. Mechanical</b>			
3.1 Check pipe system and nozzle for physical damage.	Y	Y	
3.2 Check condition of flexible hose	Y	Y	
3.3 Check condition of cylinder	Y	Y	

Y = Satisfactory N = Unsatisfactory N/A = Not Applicable

Remark : AC Power 229.1 VAC

Charger control panel 26.98 VDC

Battery back up 26.95 VDC (Start using 30/5/66)

**TAKACHIHO**

**Subject : PM. Fire Suppression System (Inergen)**

**Client : NS BLUE SCOPE STEEL (THAILAND) LTD. ( MCL3 )**

**REF.Contract NO : 24 time / 2 year**

**Inspection Date : 29 - 31 July 2023**

**Inspector : Subin, Pattanasit, Somkid, Anuchit, Kittiphop**

**Witness : Khun Songpon, Khun Sonthaya**

**Location of fire alarm control panel : MCL-3 POT EER. ROOM AUTOPLUS 542R (RCP-02)**

[illegible]

Y = Satisfactory N = Unsatisfactory N/A = Not Applicable

**Remark :** The function test detector system working is properly

\* Smoke detector cross zone delay times 60 sec.

\* Abort switch push to original time 60 sec.

\* Manual release push to discharge.

TAKACHIHO

## Preventive Maintenance Check Sheet

### Fire suppression system

Subject : PM. Fire Suppression System (Inergen)  
 Client : NS BLUE SCOPE STEEL (THAILAND) LTD. ( MCL3 )  
 REF.Contract NO : 24 time / 2 year  
 Inspection Date : 29 - 31 July 2023  
 Inspector : Subin, Pattanasit, Somkid, Anuchit, Kittiphop  
 Witness : Khun Songpon, Khun Sonthaya

Location of fire alarm control panel : MCL-3 EXIT EER. ROOM AUTOPLUS 542R (RCP-03)

Description	Status	Function test Result	Remark
<b>Electrical system</b>			
<b>1. Releasing Control Panel</b>			
1.1 Check condition of fuse control	Y	Y	
1.2 Check condition of Lamp & LEDs	Y	Y	
1.3 Check power supply for RCP and battery	Y	Y	
1.4 Check cable connection / terminal	Y	Y	
1.5 Check Alarm Condition / Function Test	Y	Y	
1.6 Visual check condition of battery and housing of battery	Y	Y	
1.7 Cleaning of RCP	Y	Y	
<b>2. Equipment</b>			
2.1 Check condition of all detector and function test zone by zone	Y	Y	
2.2 Cross zone function test of detector	Y	Y	
2.3 Check condition of all manual release	Y	Y	
2.4 Check condition of solenoid and function test	Y	Y	
2.5 Check condition of all abort switch and function test	Y	Y	
2.6 Check cable connection / terminal	Y	Y	
2.7 Visual check selector valve and function test	Y	Y	
2.8 Check condition of all alarm device and tested	Y	Y	
<b>3. Mechanical</b>			
3.1 Check pipe system and nozzle for physical damage.	Y	Y	
3.2 Check condition of flexible hose	Y	Y	
3.3 Check condition of cylinder	Y	Y	

Y = Satisfactory N = Unsatisfactory N/A = Not Applicable

Remark : AC Power 228.9 VAC

Charger control panel 26.95 VDC

Battery back up 26.93 VDC (Start using 1/6/23)

\* LED สำหรับ Inergen gas discharger (ฝั่งประตู OP118) สายขั้วตกลงกราวด์

\* Key lock สำหรับ ตู้ manual release ประตู 2 ตู้

\*

**TAKACHIHO**

**Subject : PM. Fire Suppression System (Inergen)**

Client : NS BLUE SCOPE STEEL (THAILAND) LTD. ( MCL3 )

**REF.Contract NO : 24 time / 2 year**

**Inspection Date : 29 - 31 July 2023**

**Inspector : Subin, Pattanasit, Somkid, Anuchit, Kittiphop**

**Witness : Khun Songpon, Khun Sonthaya**

Location of fire alarm control panel : MCL-3 EXIT EER. ROOM AUTOPLUS 542R (RCP-03)

[illegible]

Y = Satisfactory N = Unsatisfactory N/A = Not Applicable

**Remark :** The function test detector system working is properly

\* Smoke detector cross zone delay times 60 sec.

\* Abort switch push to original time 60 sec.

\* Manual release push to discharge.

## Preventive Maintenance Check Sheet

### Fire suppression system

Subject : PM. Fire Suppression System (Inergen)  
 Client : NS BLUE SCOPE STEEL (THAILAND) LTD. ( MCL3 )  
 REF.Contract NO : 24 time / 2 year  
 Inspection Date : 29 - 31 July 2023  
 Inspector : Subin, Pattanasit, Somkid, Anuchit, Kittiphop  
 Witness : Khun Songpon, Khun Sonthaya

Location of fire alarm control panel : MCL-3 PLC EER. ROOM AUTOPLUS 542R (RCP-04)

Description	Status	Function test Result	Remark
<b>Electrical system</b>			
<b>1. Releasing Control Panel</b>			
1.1 Check condition of fuse control	Y	Y	
1.2 Check condition of Lamp & LEDs	Y	Y	
1.3 Check power supply for RCP and battery	Y	Y	
1.4 Check cable connection / terminal	Y	Y	
1.5 Check Alarm Condition / Function Test	Y	Y	
1.6 Visual check condition of battery and housing of battery	Y	Y	
1.7 Cleaning of RCP	Y	Y	
<b>2. Equipment</b>			
2.1 Check condition of all detector and function test zone by zone	Y	Y	
2.2 Cross zone function test of detector	Y	Y	
2.3 Check condition of all manual release	Y	Y	
2.4 Check condition of solenoid and function test	Y	Y	
2.5 Check condition of all abort switch and function test	Y	Y	
2.6 Check cable connection / terminal	Y	Y	
2.7 Visual check selector valve and function test	Y	Y	
2.8 Check condition of all alarm device and tested	Y	Y	
<b>3. Mechanical</b>			
3.1 Check pipe system and nozzle for physical damage.	Y	Y	
3.2 Check condition of flexible hose	Y	Y	
3.3 Check condition of cylinder	Y	Y	

Y = Satisfactory N = Unsatisfactory N/A = Not Applicable

Remark : AC Power 229.3 VAC

Charger control panel 26.97 Vdc.

Battery back up 26.94 Vdc. (Start using 1/6/23)

**TAKACHIHO**

**Subject : PM. Fire Suppression System (Inergen)**

Client : NS BLUE SCOPE STEEL (THAILAND) LTD. ( MCL3 )

**REF.Contract NO : 24 time / 2 year**

**Inspection Date : 29 - 31 July 2023**

**Inspector : Subin, Pattanasit, Somkid, Anuchit, Kittiphop**

**Witness : Khun Songpon, Khun Sonthaya**

**Location of fire alarm control panel :** MCL-3 PLC EER. ROOM AUTOPLUS 542R (RCP-04)

[illegible]

Y = Satisfactory N = Unsatisfactory N/A = Not Applicable

**Remark :** The function test detector system working is properly

\* Smoke detector cross zone delay times 60 sec.

\* Abort switch push to original time 60 sec.

\* Manual release push to discharge.

TAKACHIHO

## Preventive Maintenance Check Sheet

### Fire suppression system

Subject : PM. Fire Suppression System (Inergen)  
 Client : NS BLUE SCOPE STEEL (THAILAND) LTD. ( MCL3 )  
 REF.Contract NO : 24 time / 2 year  
 Inspection Date : 29 - 31 July 2023  
 Inspector : Subin, Pattanasit, Somkid, Anuchit, Kittiphop  
 Witness : Khun Songpon, Khun Sonthaya

Location of fire alarm control panel : MCL-3 MV switch ROOM. AUTOPLUS 542R (RCP-05)

Description	Status	Function test Result	Remark
<b>Electrical system</b>			
<b>1. Releasing Control Panel</b>			
1.1 Check condition of fuse control	Y	Y	
1.2 Check condition of Lamp & LEDs	Y	Y	
1.3 Check power supply for RCP and battery	Y	Y	
1.4 Check cable connection / terminal	Y	Y	
1.5 Check Alarm Condition / Function Test	Y	Y	
1.6 Visual check condition of battery and housing of battery	Y	Y	
1.7 Cleaning of RCP	Y	Y	
<b>2. Equipment</b>			
2.1 Check condition of all detector and function test zone by zone	Y	Y	
2.2 Cross zone function test of detector	Y	Y	
2.3 Check condition of all manual release	Y	Y	
2.4 Check condition of solenoid and function test	Y	Y	
2.5 Check condition of all abort switch and function test	Y	Y	
2.6 Check cable connection / terminal	Y	Y	
2.7 Visual check selector valve and function test	Y	Y	
2.8 Check condition of all alarm device and tested	Y	Y	
<b>3. Mechanical</b>			
3.1 Check pipe system and nozzle for physical damage.	Y	Y	
3.2 Check condition of flexible hose	Y	Y	
3.3 Check condition of cylinder	Y	Y	

Y = Satisfactory N = Unsatisfactory N/A = Not Applicable

Remark : AC Power 228.9 VAC

Charger control panel 26.95 Vdc.

Battery back up 26.93 V.dc (Start using 1/6/23)

**TAKACHIHO**

**Subject : PM. Fire Suppression System (Inergen)**

**Client : NS BLUE SCOPE STEEL (THAILAND) LTD. ( MCL3 )**

**REF.Contract NO : 24 time / 2 year**

**Inspection Date : 29 - 31 July 2023**

**Inspector : Subin, Pattanasit, Somkid, Anuchit, Kittiphop**

**Witness : Khun Songpon, Khun Sonthaya**

[illegible]

Y = Satisfactory N = Unsatisfactory N/A = Not Applicable

**Remark :** The function test detector system working is properly

\* Smoke detector cross zone delay times 60 sec.

\* Abort switch push to original time 60 sec.

\* Manual release push to discharge.

TAKACHIHO

## **INERGEN CYLINDER SYSTEM**

## Preventive Maintenance Check Sheet

### Fire suppression system

Subject : PM. Inergen system

 Client : **NS BLUE SCOPE STEEL (THAILAND) LTD. ( MCL3 )**

 REF.Contract NO : **24 time / 2 year**

 Inspection Date : **29 - 31 July 2023**

 Inspector : **Subin, Pattanasit, Somkid, Anuchit, Kittiphop**

 Witness : **Khun Songpon, Khun Sonthaya**

 Location : **MCL-3 Entry EER Inergen Room**

item	Location	Tank no.	Inspect result	Pressure tank	Date of Manufacture	Date of Hydro Test	Remark
1	MCL-3 ENTRY EER ROOM	14103966	S	4350 Psi	Aug-17		
2	MCL-3 ENTRY EER ROOM	14103949	S	4350 Psi	Aug-17		
3	MCL-3 ENTRY EER ROOM	14103933	S	4350 Psi	Aug-17		
4	MCL-3 ENTRY EER ROOM	14104537	S	4350 Psi	Aug-17		
5	MCL-3 ENTRY EER ROOM	14104168	S	4350 Psi	Aug-17		
6	MCL-3 ENTRY EER ROOM	14103957	S	4350 Psi	Aug-17		
7	MCL-3 ENTRY EER ROOM	14104026	S	4350 Psi	Aug-17		
8	MCL-3 ENTRY EER ROOM	14104020	S	4350 Psi	Aug-17		
9	MCL-3 ENTRY EER ROOM	14104100	S	4350 Psi	Aug-17		
10	MCL-3 ENTRY EER ROOM	14104196	S	4350 Psi	Aug-17		
11	MCL-3 ENTRY EER ROOM	14103998	S	4350 Psi	Aug-17		
12	MCL-3 ENTRY EER ROOM	14104014	S	4350 Psi	Aug-17		
13	MCL-3 ENTRY EER ROOM	14104015	S	4350 Psi	Aug-17		
14	MCL-3 ENTRY EER ROOM	14104108	S	4350 Psi	Aug-17		
15	MCL-3 ENTRY EER ROOM	14104013	S	4350 Psi	Aug-17		
16	MCL-3 ENTRY EER ROOM	14104240	S	4350 Psi	Aug-17		
17	MCL-3 ENTRY EER ROOM	14104215	S	4350 Psi	Aug-17		
18	MCL-3 ENTRY EER ROOM	14104202	S	4350 Psi	Aug-17		
19	MCL-3 ENTRY EER ROOM	14104188	S	4350 Psi	Aug-17		
20	MCL-3 ENTRY EER ROOM	14104126	S	4350 Psi	Aug-17		
21	MCL-3 ENTRY EER ROOM	14104008	S	4350 Psi	Aug-17		
22	MCL-3 ENTRY EER ROOM	14104754	S	4350 Psi	Aug-17		
23	MCL-3 ENTRY EER ROOM	14103987	S	4350 Psi	Aug-17		
24	MCL-3 ENTRY EER ROOM	14104110	S	4350 Psi	Aug-17		
25	MCL-3 ENTRY EER ROOM	14103951	S	4350 Psi	Aug-17		
26	MCL-3 ENTRY EER ROOM	14104079	S	4350 Psi	Aug-17		
27	MCL-3 ENTRY EER ROOM	14104129	S	4350 Psi	Aug-17		
28	MCL-3 ENTRY EER ROOM	14104124	S	4350 Psi	Aug-17		
29	MCL-3 ENTRY EER ROOM	14104166	S	4350 Psi	Aug-17		
30	MCL-3 ENTRY EER ROOM	14103941	S	4350 Psi	Aug-17		

S = Satisfactory US = Unsatisfactory N/A = Not Applicable

REMARK:

## Preventive Maintenance Check Sheet

### Fire suppression system

Subject : PM. Inergen system

 Client : **NS BLUE SCOPE STEEL (THAILAND) LTD. ( MCL3 )**

REF.Contract NO : 24 time / 2 year

Inspection Date : 29 - 31 July 2023

Inspector : Subin, Pattanasit, Somkid, Anuchit, Kittiphop

Witness : Khun Songpon, Khun Sonthaya

 Location : **MCL-3 Entry EER Inergen Room**

item	Location	Tank no.	Inspect result	Pressure tank	Date of Manufacture	Date of Hydro Test	Remark
31	MCL-3 ENTRY EER ROOM	14183954	S	4350 Psi	Aug-17		
32	MCL-3 ENTRY EER ROOM	14104569	S	4350 Psi	Aug-17		
33	MCL-3 ENTRY EER ROOM	14104529	S	4350 Psi	Aug-17		
34	MCL-3 ENTRY EER ROOM	14104583	S	4350 Psi	Aug-17		
35	MCL-3 ENTRY EER ROOM	14104568	S	4350 Psi	Aug-17		
36	MCL-3 ENTRY EER ROOM	14104016	S	4350 Psi	Aug-17		
37	MCL-3 ENTRY EER ROOM	14103981	S	4350 Psi	Aug-17	Oct-22	
38	MCL-3 ENTRY EER ROOM	14104252	S	4350 Psi	Aug-17		
39	MCL-3 ENTRY EER ROOM	14104294	S	4350 Psi	Aug-17		
40	MCL-3 ENTRY EER ROOM	14104084	S	4350 Psi	Aug-17		
41	MCL-3 ENTRY EER ROOM	14104786	S	4350 Psi	Aug-17		
42	MCL-3 ENTRY EER ROOM	141071912	S	4350 Psi	Aug-17		
43	MCL-3 ENTRY EER ROOM	14104160	S	4350 Psi	Aug-17		
44	MCL-3 ENTRY EER ROOM	14104273	S	4350 Psi	Aug-17		
45	MCL-3 ENTRY EER ROOM	14104268	S	4350 Psi	Aug-17		
46	MCL-3 ENTRY EER ROOM	14104024	S	4350 Psi	Aug-17		
47	MCL-3 ENTRY EER ROOM	14104253	S	4350 Psi	Aug-17		
48	MCL-3 ENTRY EER ROOM	14104101	S	4350 Psi	Aug-17		
49	MCL-3 ENTRY EER ROOM	14104247	S	4350 Psi	Aug-17		
50	MCL-3 ENTRY EER ROOM	14104035	S	4350 Psi	Aug-17		
51	MCL-3 ENTRY EER ROOM	14104142	S	4350 Psi	Aug-17		
52	MCL-3 ENTRY EER ROOM	14104032	S	4350 Psi	Aug-17		
53	MCL-3 ENTRY EER ROOM	14104138	S	4350 Psi	Aug-17		
54	MCL-3 ENTRY EER ROOM	14104157	S	4350 Psi	Aug-17		
55	MCL-3 ENTRY EER ROOM	14104264	S	4350 Psi	Aug-17		
56	MCL-3 ENTRY EER ROOM	14104002	S	4350 Psi	Aug-17		
57	MCL-3 ENTRY EER ROOM	14103977	S	4350 Psi	Aug-17		
58	MCL-3 ENTRY EER ROOM	13607784	S	112 Psi (Pilot)	Aug-17		over pressure

S = Satisfactory US = Unsatisfactory N/A = Not Applicable

REMARK:

## Preventive Maintenance Check Sheet

### Fire suppression system

Subject : PM. Inergen system

Client : NS BLUE SCOPE STEEL (THAILAND) LTD. ( MCL3 )

REF.Contract NO : 24 time / 2 year

Inspection Date : 29 - 31 July 2023

Inspector : Subin, Pattanasit, Somkid, Anuchit, Kittiphop

Witness : Khun Songpon, Khun Sonthaya

Location : MCL-3 Port EER Inergen Room

item	Location	Tank no.	Inspect result	Pressure tank	Date of Manufacture	Date of Hydro Test	Remark
1	MCL 3 PORT EER ROOM	14104037	S	4350 Psi	Aug-17		
2	MCL 3 PORT EER ROOM	14104036	S	4350 Psi	Aug-17		
3	MCL 3 PORT EER ROOM	14104270	S	4350 Psi	Aug-17		
4	MCL 3 PORT EER ROOM	14104281	S	4350 Psi	Aug-17		
5	MCL 3 PORT EER ROOM	14103980	S	4350 Psi	Aug-17		
6	MCL 3 PORT EER ROOM	14104081	S	4350 Psi	Aug-17		
7	MCL 3 PORT EER ROOM	14104287	S	4350 Psi	Aug-17		
8	MCL 3 PORT EER ROOM	14104544	S	4350 Psi	Aug-17		
9	MCL 3 PORT EER ROOM	14104210	S	4350 Psi	Aug-17		
10	MCL 3 PORT EER ROOM	14104284	S	4350 Psi	Aug-17		
11	MCL 3 PORT EER ROOM	14104254	S	4350 Psi	Aug-17		
12	MCL 3 PORT EER ROOM	14104164	S	4350 Psi	Aug-17		
13	MCL 3 PORT EER ROOM	14104012	S	4350 Psi	Aug-17		
14	MCL 3 PORT EER ROOM	14104060	S	4350 Psi	Aug-17		
15	MCL 3 PORT EER ROOM	14104139	S	4350 Psi	Aug-17		
16	MCL 3 PORT EER ROOM	14104000	S	4350 Psi	Aug-17		
17	MCL 3 PORT EER ROOM	14104010	S	4350 Psi	Aug-17		
18	MCL 3 PORT EER ROOM	14104004	S	4350 Psi	Aug-17		
19	MCL 3 PORT EER ROOM	14104080	S	4350 Psi	Aug-17		
20	MCL 3 PORT EER ROOM	14104752	S	4350 Psi	Aug-17		
21	MCL 3 PORT EER ROOM	14103915	S	4350 Psi	Aug-17		
22	MCL 3 PORT EER ROOM	14104785	S	4350 Psi	Aug-17		
23	MCL 3 PORT EER ROOM	13688607	S	100 bar (Pilot)	Aug-17		

S = Satisfactory US = Unsatisfactory N/A = Not Applicable

REMARK:

## Preventive Maintenance Check Sheet

### Fire suppression system

Subject : PM. Inergen system

Client : NS BLUE SCOPE STEEL (THAILAND) LTD. ( MCL3 )

REF.Contract NO : 24 time / 2 year

Inspection Date : 29 - 31 July 2023

Inspector : Subin, Pattanasit, Somkid, Anuchit, Kittiphop

Witness : Khun Songpon, Khun Sonthaya

Location : MCL-3 Exit EER Inergen Room

item	Location	Tank no.	Inspect result	Pressure tank	Date of Manufacture	Date of Hydro Test	Remark
1	MCL 3 EXIT EER ROOM	14104149	S	4350 Psi	Aug-17		
2	MCL 3 EXIT EER ROOM	14104091	S	4350 Psi	Aug-17		
3	MCL 3 EXIT EER ROOM	14104099	S	4350 Psi	Aug-17		
4	MCL 3 EXIT EER ROOM	14104007	S	4350 Psi	Aug-17		
5	MCL 3 EXIT EER ROOM	14104262	S	4350 Psi	Aug-17		
6	MCL 3 EXIT EER ROOM	14104289	S	4350 Psi	Aug-17		
7	MCL 3 EXIT EER ROOM	14104043	S	4350 Psi	Aug-17		
8	MCL 3 EXIT EER ROOM	14104293	S	4350 Psi	Aug-17		
9	MCL 3 EXIT EER ROOM	14104028	S	4350 Psi	Aug-17		
10	MCL 3 EXIT EER ROOM	14104031	S	4350 Psi	Aug-17		
11	MCL 3 EXIT EER ROOM	14104019	S	4350 Psi	Aug-17		
12	MCL 3 EXIT EER ROOM	14071139	S	4350 Psi	Aug-17		
13	MCL 3 EXIT EER ROOM	14056469	S	4350 Psi	Aug-17		
14	MCL 3 EXIT EER ROOM	14056611	S	4350 Psi	Aug-17		
15	MCL 3 EXIT EER ROOM	14104577	S	4350 Psi	Aug-17		
16	MCL 3 EXIT EER ROOM	14071800	S	4350 Psi	Aug-17		
17	MCL 3 EXIT EER ROOM	14104797	US	0 Psi	Aug-17		Low pressure
18	MCL 3 EXIT EER ROOM	14104905	S	4350 Psi	Aug-17		
19	MCL 3 EXIT EER ROOM	14104909	S	4350 Psi	Aug-17		
20	MCL 3 EXIT EER ROOM	14056837	S	4350 Psi	Aug-17		
21	MCL 3 EXIT EER ROOM	14071192	S	4350 Psi	Aug-17		
22	MCL 3 EXIT EER ROOM	14071148	S	4350 Psi	Aug-17	Oct-22	
23	MCL 3 EXIT EER ROOM	14104034	S	4350 Psi	Aug-17		
24	MCL 3 EXIT EER ROOM	14104027	S	4350 Psi	Aug-17		
25	MCL 3 EXIT EER ROOM	14104025	S	4350 Psi	Aug-17		
26	MCL 3 EXIT EER ROOM	14103193	S	4350 Psi	Aug-17		
27	MCL 3 EXIT EER ROOM	14104045	S	4350 Psi	Aug-17		
28	MCL 3 EXIT EER ROOM	14104130	S	4350 Psi	Aug-17		
29	MCL 3 EXIT EER ROOM	14104111	US	0 Psi	Aug-17		Low pressure
30	MCL 3 EXIT EER ROOM	14104235	S	4350 Psi	Aug-17		

S = Satisfactory US = Unsatisfactory N/A = Not Applicable

REMARK: \* ดัง Inergen ที่ MCL3 Exit EER Room No. 14104797, 14104111 Low Pressure จำนวน 2 ดัง

## Preventive Maintenance Check Sheet

### Fire suppression system

**Subject : PM. Inergen system**

**Client : NS BLUE SCOPE STEEL (THAILAND) LTD. ( MCL3 )**

**REF.Contract NO : 24 time / 2 year**

**Inspection Date : 29 - 31 July 2023**

**Inspector : Subin, Pattanasit, Somkid, Anuchit, Kittiphop**

**Witness :** Khun Songpon, Khun Sonthaya

**Location : MCL-3 Exit EER Inergen Room**

[illegible]

S = Satisfactory US = Unsatisfactory N/A = Not Applicable

REMARK:

## Preventive Maintenance Check Sheet

### Fire suppression system

**Subject : PM. Inergen system**

**Client : NS BLUE SCOPE STEEL THAILAND(MCL3)**

**REF.Contract NO : 24 time / 2 year**

**Inspection Date : 29 - 31 July 2023**

**Inspector : Subin, Pattanasit, Somkid, Anuchit, Kittiphop**

**Witness :** Khun Songpon, Khun Sonthaya

**Location : MCL-3 MV EER Inergen Room**

[illegible]

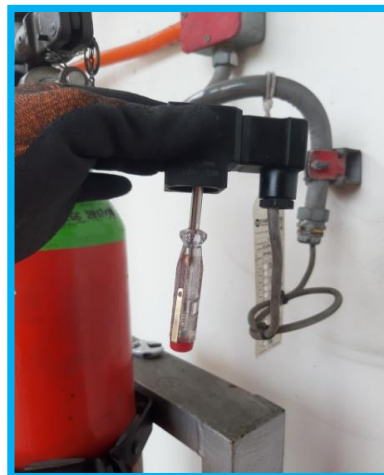
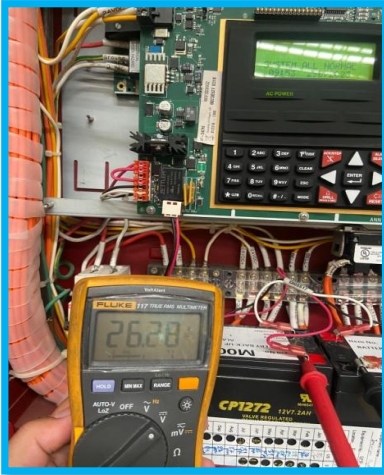
S = Satisfactory US = Unsatisfactory N/A = Not Applicable

REMARK:



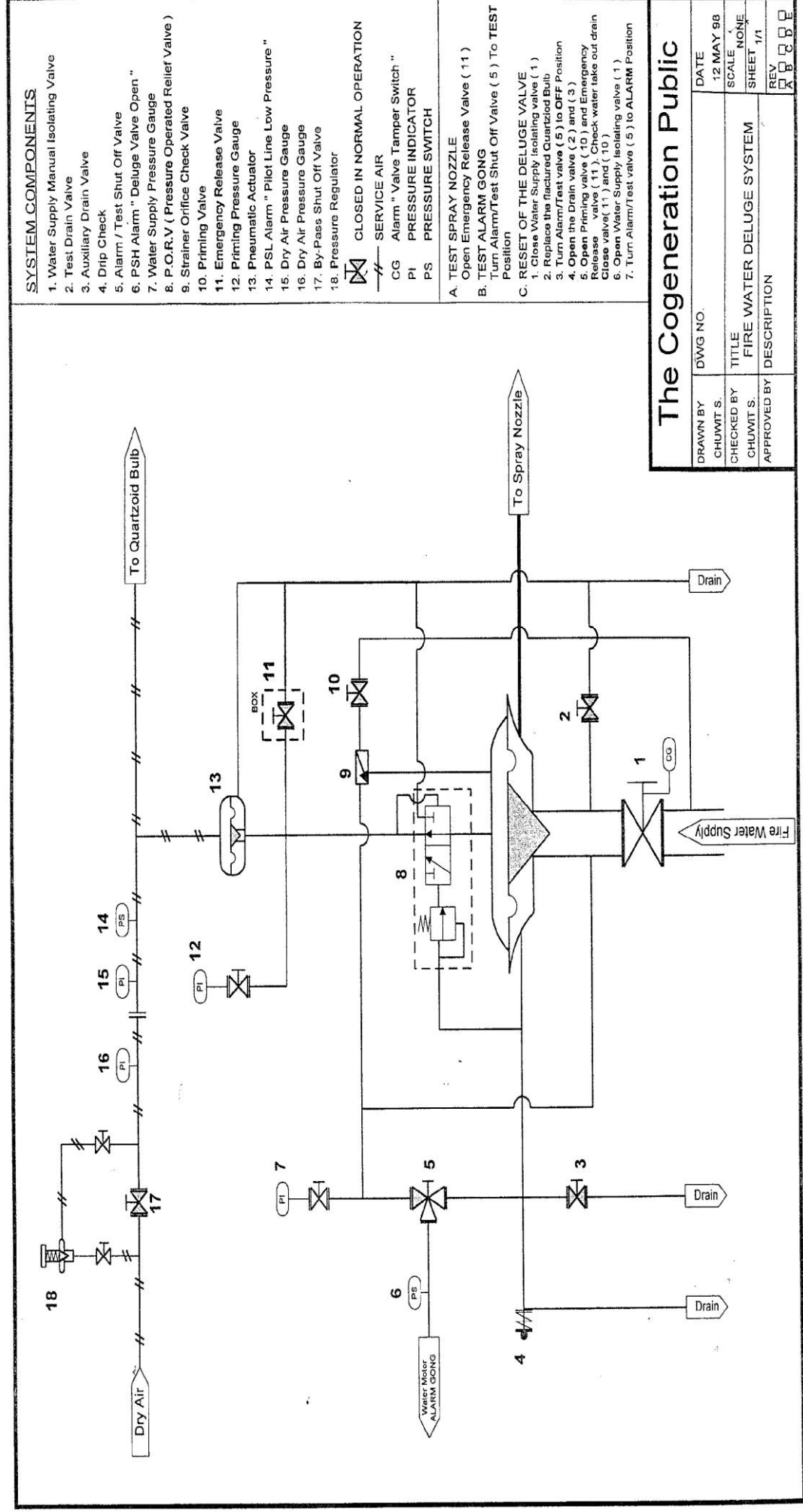
REMARK:

## FUNCTION TEST INERGEN SYSTEM



## **DELUGE SYSTEM**

## SYSTEM COMPONENTS



## The Cogeneration Public

DRAWN BY	CHUWIT S.	DWG NO.	12 MAY 98
CHECKED BY	CHUWIT S.	TITLE	FIRE WATER DELUGE SYSTEM
APPROVED BY		DESCRIPTION	
DATE	12 MAY 98	SCALE	NONE
SHEET	1/1	REV	A B C D E

## DESCRIPTION OF INSPECTION AND TEST FOR DELUGE SYSTEM

- 1 Spray Nozzle : Note condition of all nozzles. If there is no physical damage, no corrosion, and no mark " S " in block of yes. If not, assure corrections are made and briefly describe under " Remark "
- 2 Piping : Note condition of all piping. If there is no physical damage, no corrosion, no misaligned. Pipes and there are no external loads, mark " S " in block of yes. If not, assure corrections are made and briefly describe under " Remark "
- 3 Piping Hangers : Note all pipe hangers. If there is no damage and corrosion, Mark " S " in block of yes. If not, assure corrections are made and briefly describe under " Remark "
- 4 Gauges : Note condition of gauges. Record water pressure ( PSI )
- 5 Flow Test : Conduct full flow test. Assure system operates properly and record operation time.
- 6 Deluge Valve : Internal inspect deluge or preaction valve. Verify that all components operate, properly, move freely and in good condition. If so, mark " S " in block of yes. If not, assure valve is repaired and briefly describe under " Remark "
- 7 Control Valve : Operate each control valve through its full range and return to its normal position. ( Seal or relock if appropriate ) If valve operates properly, mark " S " in block of yes. If not, assure valve is repaired and briefly describe under " Remark "
- 8 Deluge Supervisory Panel and equipments appear operation. Mark " S " in block of yes. If not, assure valve is repaired and briefly describe under " Remark "
- 9 Control Valve Lubrication : Lubricate all valve systems with graphite in oil. Mark " S " in block of yes. If not, assure valve is repaired and briefly describe under " Remark "

# **AUTOMATIC SPRINKLER SYSTEM**

**DESCRIPTION OF INSPECTION AND TEST FOR AUTOMATIC SPRINKLER SYSTEM(WET PIPE)**

1 Sprinkler nozzle : Note condition of all nozzles. If there is no physical damage, no corrosion, and no obstructions, mark " S " in block of yes. If not, assure corrections are made and briefly describe under " Remark "	S
2 Piping : Note condition of all piping. If there is no physical damage, no corrosion, no misaligned. pipes and there are no external loads, mark " S " in block of yes. If not, assure corrections are made and briefly describe under " Remark "	S
3 Piping Hangers : Note all pipe hangers. If there is no damage and corrosion, Mark " S " in block of yes. If not, assure corrections are made and briefly describe under " Remark "	S
4 Gauges : Note condition of gauges. Record water pressure ( PSI )	
5 Flow Test : Conduct full flow test at test valve for ensure alarm gong or pressure switch work properly in alarm function	
6 Alarm Valve: Internal inspect alarm valve. Verify that all components to proper operate ,move freely and in good condition If so, mark " S " in block of yes. If not, assure valve is repaired and briefly describe under "remark"	S
7 Control Valve : Operate each control valve through its full range and return to its normal position. ( Seal or relock if appropriate ) If valve operates properly, mark " S " in block of yes. If not, assure valve is repaired and briefly describe under " Remark "	S
8 Main drain valve: check main drain valve are in close position and no leak	
9 Control Valve Lubrication : Lubricate all valve systems with graphite in oil. Mark " S " in block of yes. If not, assure valve is repaired and briefly describe under " Remark "	S

Inspector By: \_\_\_\_\_

### Automatic sprinkler system

Client : NS BLUE SCOPE STEEL (THAILAND) LTD. ( MCL3 )

REF.Contract NO : 24 time / 2 year

Inspection Date : 29 - 31 July 2023

Inspector : Subin, Pattanasit, Somkid, Anuchit,

Witness : Khun Songpon, Khun Sonthaya

**Location : MCL-3**

Item	Description	Location	Previous Test	supervisory system of Main Valve		Pressure Reading (Psi)			Alarm Valve	Control Valve		Piping	Spray Nozzle	Control Panel	Detector Condition	Remark		
				Lock	Temper Switch	Water Pressure	Air Pressure			Operation	Lubrication							
							below	above										
1	DV-LISTED ZONE. 1	MCL 3 . BC33	N/A	S	S	150	155	N/A	N/A	S	S	S	S	S	N/A			
2	DV-LISTED ZONE. 2	MCL 3. BE33	N/A	S	S	150	155	N/A	N/A	S	S	S	S	S	N/A			
3	DV-LISTED ZONE. 3	MCL 3 .BC31	N/A	S	S	150	165	N/A	N/A	S	S	S	S	S	N/A			
4	DV-LISTED ZONE. 4	MCL 3 .BE29	N/A	S	S	155	165	N/A	N/A	S	S	S	S	S	N/A			
5	DV-LISTED ZONE. 5	MCL 3 .BC27	N/A	S	S	145	150	N/A	N/A	S	S	S	S	S	N/A			

**Remark :**
**Comment :**

### Automatic sprinkler system

Client : NS BLUE SCOPE STEEL (THAILAND) LTD. ( MCL3 )

REF.Contract NO : 24 time / 2 year

Inspection Date : 29 - 31 July 2023

Inspector : Subin, Pattanasit, Somkid, Anuchit,

Witness : Khun Songpon, Khun Sonthaya

**Location : MCL-3**

Item	Description	Location	Previous Test	supervisory system of Main Valve		Pressure Reading (Psi)			Alarm Valve	Control Valve		Piping	Spray Nozzle	Control Panel	Detector Condition	Remark
				Lock	Temper Switch	Water Pressure	Air Pressure			Operation	Lubrication					
6	DV-LISTED ZONE. 6	MCL 3 .BE26	N/A	S	S	below 145	above 155	N/A	N/A	S	S	S	S	S	N/A	
7	DV-LISTED ZONE. 7	MCL 3 .BC21	N/A	S	S	145	150	N/A	N/A	S	S	S	S	S	N/A	
8	DV-LISTED ZONE. 8	MCL 3 .BE21	N/A	S	S	150	155	N/A	N/A	S	S	S	S	S	N/A	
9	DV-LISTED ZONE. 9	MCL 3 .BC19	N/A	S	S	145	150	N/A	N/A	S	S	S	S	S	N/A	
10	DV-LISTED ZONE. 10	MCL 3 .BE19	N/A	S	S	155	160	N/A	N/A	S	S	S	S	S	N/A	

**Remark :**
**Comment :**

### Automatic sprinkler system

Client : NS BLUE SCOPE STEEL (THAILAND) LTD. ( MCL3 )

REF.Contract NO : 24 time / 2 year

Inspection Date : 29 - 31 July 2023

Inspector : Subin, Pattanasit, Somkid, Anuchit,

Witness : Khun Songpon, Khun Sonthaya

**Location : MCL 3**

Item	Description	Location	Previous Test	supervisory system of Main Valve		Pressure Reading (Psi)				Alarm Valve	Control Valve		Piping	Spray Nozzie	Control Panel	Detector Condition	Remark
						Lock	Temper Switch	Water Pressure	Air Pressure								
				below	above												
11	DV-LISTED ZONE. 11	MCL 3 .BC13	N/A	S	S	145	150	N/A	N/A	S	S	S	S	S	N/A		
12	DV-LISTED ZONE. 12	MCL 3 .BE12	N/A	S	S	150	155	N/A	N/A	S	S	S	S	S	S	N/A	
13	DV-LISTED ZONE. 13	MCL 3 .BC10	N/A	S	S	155	165	N/A	N/A	S	S	S	S	S	S	N/A	
14	DV-LISTED ZONE. 14	MCL 3 .BE10	N/A	S	S	150	155	N/A	N/A	S	S	S	S	S	S	N/A	
15	DV-LISTED ZONE. 15	MCL 3 .BC5	N/A	S	S	155	165	N/A	N/A	S	S	S	S	S	S	N/A	

**Remark :** \_\_\_\_\_

**Comment :** \_\_\_\_\_

## Automatic sprinkler system

Client : NS BLUE SCOPE STEEL (THAILAND) LTD. ( MCL3 )

REF.Contract NO : 24 time / 2 year

Inspection Date : 29 - 31 July 2023

Inspector : Subin, Pattanasit, Somkid, Anuchit,

Witness : Khun Songpon, Khun Sonthaya

**Location : MCL 3**

Item	Description	Location	Previous Test	supervisory system of Main Valve		Pressure Reading (Psi)			Alarm Valve	Control Valve		Piping	Spray Nozzie	Control Panel	Detector Condition	Remark
				Locke	Temper Switch	Water Pressure	Air Pressure			Operation	Lubrication					
16	DV-LISTED ZONE. 16	MCL 3 .BF5	N/A	S	S	155	160	N/A	N/A	S	S	S	S	S	N/A	
17	DV-LISTED ZONE. 17	MCL 3 .BD4	N/A	S	S	150	165	N/A	N/A	S	S	S	S	S	N/A	
18	DV-LISTED ZONE. 18	MCL 3 .BH5	N/A	S	S	150	160	N/A	N/A	S	S	S	S	S	N/A	
19	DV-LISTED ZONE. 19	MCL 3 .BH4	N/A	S	S	150	165	N/A	N/A	S	S	S	S	S	N/A	
20	DV-LISTED ZONE. 20	MCL 3 .BI5	N/A	S	S	150	155	N/A	N/A	S	S	S	S	S	N/A	

**Remark :**

**Comment :**

S = Satisfactory US = Unsatisfactory N/A = Not Applicable

### Automatic sprinkler system

Client : NS BLUE SCOPE STEEL (THAILAND) LTD. ( MCL3 )

REF.Contract NO : 24 time / 2 year

Inspection Date : 29 - 31 July 2023

Inspector : Subin, Pattanasit, Somkid, Anuchit,

Witness : Khun Songpon, Khun Sonthaya

Location : Reserve Unit

Item	Description	Location	Previous Test	supervisory system of Main Valve		Pressure Reading (Psi)			Alarm Valve	Control Valve		Piping	Spray Nozzle	Control Panel	Detector Condition	Remark
				Locke	Temper Switch	Water Pressure	Air Pressure			Operation	Lubrication					
21	DV-LISTED ZONE. 21	MCL 3 .B14	N/A	S	S	150	155	N/A	N/A	S	S	S	S	S	N/A	
22	DV-LISTED ZONE. 22	MCL 3 .OP105	N/A	S	S	150	155	N/A	N/A	S	S	S	S	S	N/A	
23	DV-LISTED ZONE. 23	MCL 3 .OP109	N/A	S	S	155	150	N/A	N/A	S	S	S	S	S	N/A	
24	AV-LISLED NO.1	WEST WATER	N/A	S	S	155	165	N/A	N/A	S	S	S	S	S	N/A	
25	AV-LISLED NO.2	EGD & POT PULPIT	N/A	S	S	155	165	N/A	N/A	S	S	S	S	S	N/A	

Remark :

Comment :

S = Satisfactory US = Unsatisfactory N/A = Not Applicable

## Automatic sprinkler system

Client : NS BLUE SCOPE STEEL (THAILAND) LTD. ( MCL3 )

REF.Contract NO : 24 time / 2 year

Inspection Date : 29 - 31 July 2023

Inspector : Subin, Pattanasit, Somkid, Anuchit,

Witness : Khun Songpon, Khun Sonthaya

### Location : Reserve Unit

Item	Description	Location	Previous Test	supervisory system of Main Valve		Pressure Reading (Psi)			Alarm Valve	Control Valve		Piping	Spray Nozzie	Control Panel	Detector Condition	Remark
				Locke	Temper Switch	Water Pressure	Air Pressure			Operation	Lubrication					
26	AV-LISTED NO.3	COATOR PULPIT	N/A	S	S	150	160	N/A	N/A	S	S	S	S	S	N/A	
27	AV-LISTED NO. 4	Gamling area	N/A	S	S	150	165	N/A	N/A	S	S	S	S	S	N/A	
28	AV-LISTED NO. 5	Gamling area	N/A	S	S	150	165	N/A	N/A	S	S	S	S	S	N/A	
29	AV-LISTED NO. 6	ENTRY WASH	N/A	S	S	150	160	N/A	N/A	S	S	S	S	S	N/A	
30	AV-LISTED NO. 7	LAB&PROCESS	N/A	S	S	155	160	N/A	N/A	S	S	S	S	S	N/A	

Remark :

Comment :

S = Satisfactory US = Unsatisfactory N/A = Not Applicable

### Automatic sprinkler system

Client : **NS BLUE SCOPE STEEL (THAILAND) LTD. ( MCL3 )**

REF.Contract NO : **24 time / 2 year**

Inspection Date : **29 - 31 July 2023**

Inspector : **Subin, Pattanasit, Somkid, Anuchit,**

Witness : **Khun Songpon, Khun Sonthaya**

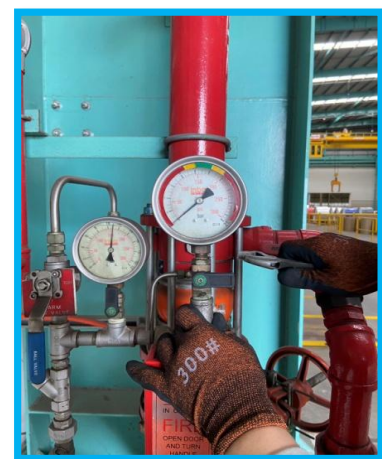
**Location : Reserve Unit**

Item	Description	Location	Previous Test	supervisory system of Main Valve		Pressure Reading (Psi)			Alarm Valve	Control Valve		Piping	Spray Nozzie	Control Panel	Detector Condition	Remark
				Locke	Temper Switch	Water Pressure	Air Pressure			Operation	Lubrication					
31	AV-LISTED NO. 8	MCL 3 .OP 122	N/A	S	N/A	below 150	above 180	N/A	N/A	S	S	S	S	S	N/A	Relief Valve
32	AV-LISTED NO. 9	MCL 3 .Fire Pump	N/A	S	N/A	150	160	N/A	N/A	S	S	S	S	S	N/A	

**Remark :**

**Comment :**

## เปลี่ยน Pressure Gauge DV-17 and DV-20



## **FIRE HYDRANT SYSTEM**

Inspection Report

FIRE HYDRANT

OWNER: NS BLUE SCOPE STEEL (THAILAND) LTD. ( MCL3 )

Contractor Name: PM. Fire Protection System

Area : NS blue scope steel

Date : 29 - 31 July 2023

Site : Rayong

Description		Equipment No.								REMARKS
		NO.1	NO.2	NO.3	NO.4	NO.5	NO.6	NO.7	NO.8	
Flangs	- Corrosion	MCL-3	MCL-3	MCL-3	MCL-3	MCL-3	MCL-3	MCL-3	MCL-3	
	- Gasket	N/A	N/A	N/A	N/A	N/A	N/A	N/A	N/A	
	- Bolt&Nut	N/A	N/A	N/A	N/A	N/A	N/A	N/A	N/A	
Piping	- Corrosion	S	S	US	S	S	S	S	S	
	- Thread	S	S	S	S	S	S	S	S	
	- Leakage	S	S	S	S	S	S	S	S	
Valve	- Handle	S	S	S	S	S	S	S	S	
	- Leakage	S	S	S	S	S	S	S	S	
	- Stem Packing	S	S	S	S	S	S	S	S	
Coupling	- Corrosion	S	S	S	S	S	S	S	S	
	- Seal Condition	S	S	S	S	S	S	S	S	
	- Leakage	S	S	S	S	S	S	S	S	
	- Connector Locker	S	S	S	S	S	S	S	S	
	-Cap	S	S	S	S	S	S	S	S	

S = Satisfactory US = Unsatisfactory N/A = Not Applicable

Remark: \* No. 3 สภาพท่อถูกัดกร่อนเป็นสนิม

Checked by : Subin, Pattanasit, Somkid, Anuchit, Kittiphop

## **FIRE HOSE CABINET**

## Inspection Report

### FIRE HOSE CABINET

OWNER: NS BLUE SCOPE STEEL (THAILAND) LTD. ( MCL3 )  
 Contractor Name: PM. Fire Protection System  
 Area : NS blue scope steel  
 Date : 29 - 31 July 2023  
 Site : Rayong

Description		Equipment No.										REMARKS
		NO.4	NO.5									
Cabinet	- Corrosion	S	S									
	- Door	S	S									
	- Key lock	S	S									
	- Corrosion	S	S									
support	Condition	S	S									
hose	Coupling	S	S									
	Connector Locker	S	S									
	Seal condition	S	S									
	Hydrostatic test 300 psi size 1.5"	N/A	N/A									
	Hydrostatic test 300 psi size 2.5"	มีสาย2เส้นหักจุด1	มีสาย2เส้นหักจุด1									
nozzel	- Leakage	S	S									
	- Condition	S	S									
	- Corrosion	S	S									

S = Satisfactory US = Unsatisfactory N/A = Not Applicable

Remark:

Checked by : Subin, Pattanasit, Somkid, Anuchit, Kittiphop

**FIRE HOSE REEL OR  
STANDPIPE AND HOSE  
SYSTEM**

## Inspection Report

### FIRE HOSE REEL OR STANDPIPE AND HOSE SYSTEM

OWNER: NS BLUE SCOPE STEEL (THAILAND) LTD. ( MCL3 ) Area : NS blue scope steel

Project name: PM. Fire Protection System Date : 29 - 31 July 2023

Site : Rayong

Description		Equipment No.									REMARKS
		NO.1	NO.2	NO.3	NO.4	NO.5	NO.6	NO.7	NO.8	NO.9	
		MCL-3 BC30	MCL-3 BC25	MCL-3 BC20	MCL-3 BC13	MCL-3 BC8	MCL-3 BC4	MCL-3 B14	MCL-3 BE8	MCL-3 BE16	
Cabinet	- Corrosion	N/A	N/A	N/A	N/A	N/A	N/A	N/A	N/A	N/A	
	- Door	N/A	N/A	N/A	N/A	N/A	N/A	N/A	N/A	N/A	
	- Key lock	N/A	N/A	N/A	N/A	N/A	N/A	N/A	N/A	N/A	
Support	- Corrosion	S	S	S	S	S	S	S	S	S	
	Condition	S	S	S	S	S	S	S	S	S	
Component	Control valve condition	S	S	S	S	S	S	S	S	S	
	Connector Locker	S	S	S	S	S	S	S	S	S	
	Seal condition	S	S	S	S	S	S	S	S	S	
	Pipe system is in good condition	S	S	S	S	S	S	S	S	S	
	all hose and hose valve is in good condition	S	S	S	S	S	S	S	S	S	
Nozzel	- Leakage	S	S	S	S	S	S	S	S	S	
	- Condition	S	S	S	S	S	S	S	S	S	
	- Corrosion	S	S	S	S	S	S	S	S	S	

S = Satisfactory US = Unsatisfactory N/A = Not Applicable

Remark:

## Inspection Report

### FIRE HOSE REEL OR STANDPIPE AND HOSE SYSTEM

OWNER: NS BLUE SCOPE STEEL (THAILAND) LTD. ( MCL3 ) Area : NS blue scope steel

Project name: PM. Fire Protection System Date : 29 - 31 July 2023

Site : Rayong

Description		Equipment No.										REMARKS
		NO.10	NO.11	NO.12	NO.13	NO.14	NO.15	NO.16	NO.17	NO.18		
		MCL-3 BE25	MCL-3 BE34	MCL-3 West water	MCL-3 west water	MCL-3 Gamling	MCL-3 gamling	MCL-3 Gamling	MCL-3 Gamling	MCL-3 Gamling		
Cabinet	- Corrosion	N/A	N/A	N/A	N/A	N/A	N/A	N/A	N/A	N/A	N/A	
	- Door	N/A	N/A	N/A	N/A	N/A	N/A	N/A	N/A	N/A	N/A	
	- Key lock	N/A	N/A	N/A	N/A	N/A	N/A	N/A	N/A	N/A	N/A	
Support	- Corrosion	S	S	S	S	S	S	S	S	S	S	
	Condition	S	S	S	S	S	S	S	S	S	S	
Component	Control valve condition	S	S	S	S	S	S	S	S	S	S	
	Connector Locker	S	S	S	S	S	S	S	S	S	S	
	Seal condition	S	S	S	S	S	S	S	S	S	S	
	Pipe system is in good condition	S	S	S	S	S	S	S	S	S	S	
	all hose and hose valve is in good condition	S	S	S	S	S	S	S	S	S	S	
Nozzle	- Leakage	S	S	S	S	S	S	S	S	S	S	
	- Condition	S	S	S	S	S	S	S	S	S	S	
	- Corrosion	S	S	S	S	S	S	S	S	S	S	

S = Satisfactory US = Unsatisfactory N/A = Not Applicable

Remark:

Checked by : Subin, Pattanasit, Somkid, Anuchit, Kittiphop

## Inspection Report

### FIRE HOSE REEL OR STANDPIPE AND HOSE SYSTEM

OWNER: NS BLUE SCOPE STEEL (THAILAND) LTD. ( MCL3 ) Area : NS blue scope steel

Project name: PM. Fire Protection System Date : 29 - 31 July 2023

Site : Rayong

Description		Equipment No.										REMARKS
		NO.19	NO.20	NO.21	NO.22	NO.23	NO.24	NO.25				
		MCL-3 FL.1	MCL-3 FL.2	MCL-3 FL.3	MCL-3 FL.4	MCL-3 FL.5	MCL-3 FL.6	MCL-3 FL.7				
Cabinet	- Corrosion	N/A	N/A	N/A	N/A	N/A	N/A	N/A	N/A			
	- Door	N/A	N/A	N/A	N/A	N/A	N/A	N/A	N/A			
	- Key lock	N/A	N/A	N/A	N/A	N/A	N/A	N/A	N/A			
Support	- Corrosion	S	S	S	S	S	S	S	S			
	Condition	S	S	S	S	S	S	S	S			
Component	Control valve condition	S	S	S	S	S	S	S	S			
	Connector Locker	S	S	S	S	S	S	S	S			
	Seal condition	S	S	S	S	S	S	S	S			
	Pipe system is in good condition	S	S	S	S	S	S	S	S			
	all hose and hose valve is in good condition	S	S	S	S	S	S	S	S			
Nozzle	- Leakage	S	S	S	S	S	S	S	S			
	- Condition	S	S	S	S	S	S	S	S			
	- Corrosion	S	S	S	S	S	S	S	S			

S = Satisfactory US = Unsatisfactory N/A = Not Applicable

Remark:

Checked by : Subin, Pattanasit, Somkid, Anuchit, Kittiphop

**FIRE PUMP**

## MAINTENANCE & INSPECTION CHECKLIST

### ENGINE FIRE PUMP SYSTEM NO.1

 PROJECT NAME : **BLUE SCOPE STEEL THAILAND (MCL 3)**

 LOCATION : **RAYONG ,THAILAND.**

ENGINE BRAND	JOHN DEERE	MODEL	6090HFC47	SERIAL No.	RG6090L130015
RATING	-	SPEED	1760	RPM.	
PUMP BRAND	PENTAIR	MODEL	8-491-18A	SERIAL No.	17-2508720
FLOW RATE	3000 GPM	SUCTION DIA.	12"	DISCHARGE DIA.	8"
DESIGN PRESSURE	125	SPEED	1760	RPM.	
CONTROL PANEL BRAND	FIRE TROL	MODEL	FTA1100-JL12N	SERIAL No.	1546968-01RE
ELECTRICAL SYSTEM	AC	VOLTS.	220	GROUND	NEG

#### MONTHLY PREVENTATIVE MAINTENANCE

##### ENGINE

ITEM	DESCRIPTION	
1	WATER TEMPERATURE	70°C
2	WATER LEVEL	Normal
3	OIL LEVEL	Normal
4	OIL PRESSURE	37 Psi
5	VOLTS. (CHARGING ALTERNATOR)	14.6/14.6
6	AMP.(CHARGING ALTERNATOR)	Normal
7	SPEED RUNNING	1762
8	HOUR RUNNING	25.8
9	FUEL LEVEL 3 / 4 OR 80%	90%
10	BATTERY ELECTROLYTE	Normal
11	CHECKED FOR WATER LEAK	Normal
12	CHECKED FOR FUEL LEAK	Normal
13	CHECKED FOR OIL LEAK	Normal
14	CLEANED	Normal

##### PUMP

ITEM	DESCRIPTION	
1	VISUAL CHECKED	Normal
2	BEARING TEMPERATURE	54/47 °C
3	DISCHARGE PRESSURE	150 Psi
4	SUCTION PRESSURE	0 Psi
5	NOISE	Normal
6	COUPLING	Normal
7	CHECKED FOR WATER LEAKE #	Normal
8	CHECKED PIPE & CONNECTOR	Normal
9	CHECKED PACKING SEAL #	Normal
10	CHECKED FOR LUBRICATE	Normal
11	CHECKED FOR CORROSION	Normal
12	CLEANED	Normal

##### CONTROL PANEL

ITEM	DESCRIPTION	
1	CLEANED	Normal
2	LAMP TESTED	Normal
3	CHECKED POWER SUPPLY	Normal
4	BATTERY CHARGER	Normal

##### CONTROL PANEL(CONTINUE)

ITEM	DESCRIPTION	
5	VOLTS. (CHARGER) BATT.1 / BATT.2	14.3/14.7
6	AMP.(CHARGER) BATT.1 / BATT.2	2.4/2.8
7	CHECKED FOR CORROSION	Normal
8	START AT PRESSURE	120 Psi

##### RECOMMENDATION

\*Check condition of pump and cleaning

\*function test manual/auto the pump is working properly

\* Replace spare part 27/6/23

Start using battery 5/6/21

Subin, Pattanasit, Somkid, Anuchit, Kittiphop

Takachiho Fire, Security &amp; Services (Thailand) Limited

## MAINTENANCE & INSPECTION CHECKLIST

### ELECTRIC MOTOR FIRE PUMP SYSTEM

 PROJECT NAME : **BLUE SCOPE STEEL THAILAND (MCL3)**

 LOCATION : **RAYONG ,THAILAND.**

MOTOR BRAND	<b>MARATHON</b>	MODEL	<b>SF 449TSTFS14542AA W.</b>	SERIAL No.	<b>WAA111229</b>
RATING		SPEED	<b>1485</b>	RPM.	
ELECTRICAL SYSTEM	<b>AC</b>	VOLTS.	<b>380</b> Hz.	AMP.	<b>410</b>
PUMP BRAND	<b>PENTAIR</b>	MODEL	<b>10-471-20B</b>	SERIAL No.	<b>17-2517080</b>
FLOW RATE	<b>3000 GPM</b>	SUCTION DIA.	<b>12"</b>	DISCHARGE DIA.	<b>10"</b>
DESIGN PRESSURE		SPEED		RPM.	
CONTROL PANEL BRAND	<b>FIRE TROL</b>	MODEL	<b>FTA1300-AM300FZ</b>	SERIAL No.	<b>1547587-01RE</b>
ELECTRICAL SYSTEM	<b>AC</b>	VOLTS.	<b>380</b>	GROUND	<b>NEG.</b>

### MONTHLY PREVENTATIVE MAINTENANCE

#### MOTOR

ITEM	DESCRIPTION	
1	VISUAL CHECKED	Normal
2	BEARING TEMPERATURE	31/32 °C
3	VOLTS	390/388/288
4	AMP.	277/388/288
5	SPEED RUNNING (RPM.)	1496
6	MOTOR VENTILATION	Normal
7	LUBRICATING	Normal
8	CORROSION	Normal
9	NOISE	Normal
10	ANTIVIBRATION MOUNTING	Normal
11	CLEANED	Normal
12		

#### PUMP

ITEM	DESCRIPTION	
1	VISUAL CHECKED	Normal
2	BEARING TEMPERATURE	32 °C
3	DISCHARGE PRESSURE	155 Psi
4	SUCTION PRESSURE	0.4 Psi
5	NOISE	Normal
6	CLOUPLING	Normal
7	CHECKED FOR WATER LEAK	Normal
8	CHECKED PIPE & CONNECTOR	Normal
9	CHECKED PACKING SEAL	Normal
10	CHECKED FOR LUBRICATE	Normal
11	CHECKED FOR CORROSION	Normal
12	CLEANED	Normal

#### CONTROL PANEL

ITEM	DESCRIPTION	
1	VISUAL CHECK	Normal
2	CLEANED	Normal
3	CHECKED POWER SUPPLY	Normal
4	CHECKED SIGNAL LAMP	Normal

#### CONTROL PANEL (CONTINUE)

ITEM	DESCRIPTION	
5	CONTROL SIGNAL TESTED	Normal
6	MAGNETIC CONTACTOR	Normal
7	CHECKED FOR CORROSION	Normal
8	START AT PRESSURE	130 Psi

#### RECOMMENDATION

Check condition of pump and cleaning

\*function test manual/auto the pump is working properly

Subin, Pattanasit, Somkid, Anuchit, Kittiphop

**Takachiho Fire, Security & Services (Thailand) Limited**

## MAINTENANCE & INSPECTION CHECKLIST

### ELECTRIC MOTOR JOCKEY PUMP SYSTEM

 PROJECT NAME : **BLUE SCOPE STEEL THAILAND (MCL 3)**

 LOCATION : **RAYONG ,THAILAND.**

MOTOR BRAND	WEG	MODEL	W21-AL112M-02	SERIAL No.	1035756327
RATING		SPEED	2870	RPM.	
ELECTRICAL SYSTEM	AC	VOLTS.	380 Hz.	50	AMP. 8.18
PUMP BRAND	PENTAIR	MODEL	PVMI5-22-F-TI1-50	SERIAL No.	211000275-1/1
FLOW RATE	2.5-8.5 m3/h	SUCTION DIA.	1 1/2"	DISCHARGE DIA.	1 1/2"
DESIGN PRESSURE	142-69 m	SPEED	2900	RPM.	
CONTROL PANEL BRAND	FIRE TROL	MODEL		SERIAL No.	
ELECTRICAL SYSTEM	AC	VOLTS.	380	GROUND	NEG

#### MOTOR

ITEM	DESCRIPTION	
1	VISUAL CHECKED	Normal
2	BEARING TEMPERATURE	31/31 °C
3	VOLTS	397/396/396
4	AMP	5.7/6.0/5.9
5	SPEED RUNNING (RPM.)	2940
6	MOTOR VENTILATION	Normal
7	LUBRICATING	Normal
8	CORROSION	Normal
9	NOISE	Normal
10	ANTIVIBRATION MOUNTING	Normal
11	CLEANED	Normal
12		

#### PUMP

ITEM	DESCRIPTION	
1	VISUAL CHECKED	Normal
2	BEARING TEMPERATURE	30 °C
3	DISCHARGE PRESSURE	160 Psi
4	SUCTION PRESSURE	0.4 Psi
5	NOISE	Normal
6	CLOUPLING	Normal
7	CHECKED FOR WATER LEAKE	Normal
8	CHECKED PIPE & CONNECTOR	Normal
9	CHECKED PACKING SEAL	Normal
10	CHECKED FOR LUBRICATE	Normal
11	CHECKED FOR CORROSION	Normal
12	CLEANED	Normal

#### CONTROL PANEL

ITEM	DESCRIPTION	
1	VISUAL CHECK	Normal
2	CLEANED	Normal
3	CHECKED POWER SUPPLY	Normal
4	CHECKED SIGNAL LAMP	Normal

#### CONTROL PANEL (CONTINUE)

ITEM	DESCRIPTION	
5	CONTROL SIGNAL TESTED	Normal
6	MAGNATIC CONTACTOR	Normal
7	CHECKED FOR CORROSION	Normal
8	START AT PRESSURE	135 Psi
	CUT OFF	150 Psi

#### RECOMMENDATION

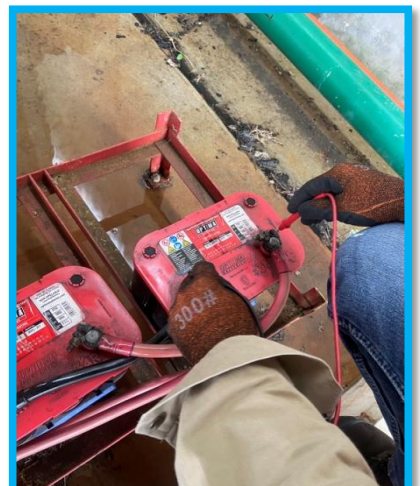
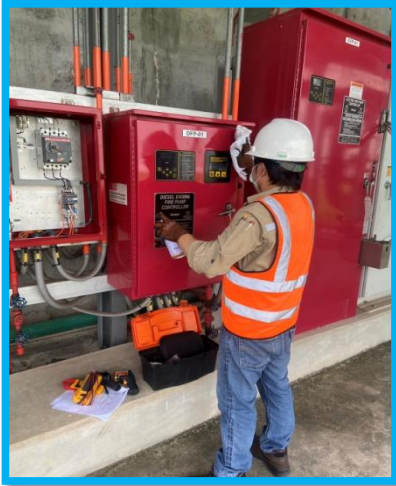
Check condition of pump and cleaning

\*function test manual/auto the pump is working properly

Subin, Pattanasit, Somkid, Anuchit, Kittiphop

Takachiho Fire, Security & Services (Thailand) Limited

## FUNCTION TEST FIRE PUMP SYSTEM



**PORTABLE FIRE  
EXTINGUISHERS SYSTEM**



**Takachiho Fire, Security & Services (Thailand) Ltd.**  
1858/110-111 Interlink Tower Bangna 25 Fl.,  
Debaratna Road, Bangna Tai, Bangna,  
Bangkok 10260, Thailand.  
Telephone no. : 02-366-9000  
Facsimile no. : 02-366-9090  
[www.tkfs.co.th](http://www.tkfs.co.th)

## INSPECTION PORTABLE FIRE EXTINGUISHERS

### Dry Chemical Portable Fire Extinguisher

Client : NS BLUE SCOPE STEEL THAILAND

Inspection Date : 7 August 2023

Inspector : Subin, Pattanasit, Somkid, Anuchit, Kittiphop

Item	Ext.No.	Type/lb	Brand	Location		Hose ,Nozzle	fill cap	handle,shell	Gas cartridge	Dry Powder or Water Foam	Pressurere ading	Date of Manufacture	Date of Hydro Test	Total Year	Remark
				Building Area											
1	1	Dry chemical/10 lb	Sunto	MCL3 OP 122/BJ 4		S	S	S	N/A	S	195 PSI	2018/01		5	
2	2	Dry chemical/10 lb	Sunto	MCL3 BH 4		S	S	S	N/A	S	195 PSI	2018/01		5	
3	3	Dry chemical/10 lb	Sunto	MCL3 BG 4		S	S	S	N/A	S	195 PSI	2018/01		5	
4	4	Dry chemical/10 lb	Sunto	MCL3 BE 4		S	S	S	N/A	S	195 PSI	2018/01		5	
5	5	Dry chemical/10 lb	Sunto	MCL3 OP126/ BJ 5		S	S	S	N/A	S	195 PSI	2018/01		5	
6	6	Dry chemical/10 lb	Sunto	MCL3 BH 5		S	S	S	N/A	S	195 PSI	2018/01		5	
7	7	Dry chemical/10 lb	Sunto	MCL3 BE 6		S	S	S	N/A	S	195 PSI	2018/01		5	
8	8	Dry chemical/10 lb	Sunto	MCL3 WEST LAB ROOM		S	S	S	N/A	S	195 PSI	2018/01		5	
9	9	Dry chemical/10 lb	Sunto	MCL3 BE 8		S	S	S	N/A	S	195 PSI	2018/01		5	
10	10	Dry chemical/10 lb	Sunto	MCL3 OP 127/BE 10		S	S	S	N/A	S	195 PSI	2018/01		5	
11	11	Dry chemical/10 lb	Sunto	MCL3 BE 11 / OP 129		S	S	S	N/A	S	195 PSI	2018/01		5	
12	12	Dry chemical/10 lb	Sunto	MLC3 PORT PS / PIT RM.		S	S	S	N/A	S	195 PSI	2018/01		5	
13	13	Dry chemical/10 lb	Sunto	MCL3 BE 12		S	S	S	N/A	S	195 PSI	2018/01		5	
14	14	Dry chemical/10 lb	Sunto	MCL3 BE 16		S	S	S	N/A	S	195 PSI	2018/01		5	
15	15	Dry chemical/10 lb	Sunto	MCL3 POT CELLAR		S	S	S	N/A	S	195 PSI	2018/01		5	

S = Satisfactory US = Unsatisfactory N/A = Not Applicable



**Takachiho Fire, Security & Services (Thailand) Ltd.**  
1858/110-111 Interlink Tower Bangna 25 Fl.,  
Debaratna Road, Bangna Tai, Bangna,  
Bangkok 10260, Thailand.  
Telephone no. : 02-366 -9000  
Facsimile no. : 02-366-9090  
[www.tkfs.co.th](http://www.tkfs.co.th)

**TAKACHIHO**  
**FIRE, SECURITY & SERVICES (THAILAND) LTD.**

## INSPECTION PORTABLE FIRE EXTINGUISHERS

### Dry Chemical Portable Fire Extinguisher

Client : NS BLUE SCOPE STEEL THAILAND

Inspection Date : 7 August 2023

Inspector : Subin, Pattanasit, Somkid, Anuchit, Kittiphop

Item	Ext.No.	Type/lb	Brand	Location		Hose ,Nozzle	fill cap	handle,shell	Gas cartridge	Dry Powder or Water Foam	Pressurere ading	Date of Manufacture	Date of Hydro Test	Total Year	Remark
				Building Area											
16	16	Dry chemical/10 lb	Sunto	MCL3 OP 131		S	S	S	N/A	S	195 PSI	2018/01		5	
17	17	Dry chemical/10 lb	Sunto	MCL3 BE 19		S	S	S	N/A	S	195 PSI	2018/01		5	
18	18	Dry chemical/10 lb	Sunto	MCL3 OP 132		S	S	S	N/A	S	195 PSI	2018/01		5	
19	19	Dry chemical/10 lb	Sunto	MCL3 BE 24		S	S	S	N/A	S	195 PSI	2018/01		5	
20	20	Dry chemical/10 lb	Sunto	MCL3 MEETING Room.		S	S	S	N/A	S	195 PSI	2018/01		5	
21	21	Dry chemical/10 lb	Sunto	MCL3 BE 27		S	S	S	N/A	S	195 PSI	2018/01		5	
22	22	Dry chemical/10 lb	Sunto	MCL3 ENTRY PULPIT		S	S	S	N/A	S	195 PSI	2018/01		5	
23	23	Dry chemical/10 lb	Sunto	MCL3 OP 134		S	S	S	N/A	S	195 PSI	2018/01		5	
24	24	Dry chemical/10 lb	Sunto	MCL3 BE 31		S	S	S	N/A	S	195 PSI	2018/01		5	
25	25	Dry chemical/10 lb	Sunto	MCL3 BE 32		S	S	S	N/A	S	195 PSI	2018/01		5	
26	26	Dry chemical/10 lb	Sunto	MCL3 OP 135/BE 34		S	S	S	N/A	S	195 PSI	2018/01		5	
27	27	Dry chemical/10 lb	Sunto	MCL3 OP 136/ OP 94		S	S	S	N/A	S	195 PSI	2018/01		5	
28	28	Dry chemical/10 lb	Sunto	MCL3 BC 34 / OP 95		S	S	S	N/A	S	195 PSI	2018/01		5	
29	29	Dry chemical/10 lb	Sunto	MCL3 BC 32		S	S	S	N/A	S	195 PSI	2018/01		5	
30	30	Dry chemical/10 lb	Sunto	MCL3 BC 31		S	S	S	N/A	S	195 PSI	2018/01		5	

S = Satisfactory US = Unsatisfactory N/A = Not Applicable



**Takachiho Fire, Security & Services (Thailand) Ltd.**  
1858/110-111 Interlink Tower Bangna 25 Fl.,  
Debaratna Road, Bangna Tai, Bangna,  
Bangkok 10260, Thailand.  
Telephone no. : 02-366 -9000  
Facsimile no. : 02-366-9090  
[www.tkfs.co.th](http://www.tkfs.co.th)

## INSPECTION PORTABLE FIRE EXTINGUISHERS

### Dry Chemical Portable Fire Extinguisher

Client : NS BLUE SCOPE STEEL THAILAND

Inspection Date : 7 August 2023

Inspector : Subin, Pattanasit, Somkid, Anuchit, Kittiphop

Item	Ext.No.	Type/lb	Brand	Location Building Area	Hose ,Nozzle	fill cap	handle,shell	Gas cartridge	Dry Powder or Water Foam	Pressurere ading	Date of Manufacture	Date of Hydro Test	Total Year	Remark
31	31	Dry chemical/10 lb	Sunto	MCL3 WWT / BC 28	S	S	S	N/A	S	195 PSI	2018/01		5	
32	32	Dry chemical/10 lb	Sunto	MCL3 AIR COM / BC 26	S	S	S	N/A	S	195 PSI	2018/01		5	
33	33	Dry chemical/10 lb	Sunto	MCL3 WWT / TK 2	S	S	S	N/A	S	195 PSI	2018/01		5	
34	34	Dry chemical/10 lb	Sunto	MCL3 WEST WATER	S	S	S	N/A	S	195 PSI	2018/01		5	
35	35	Dry chemical/10 lb	Sunto	MCL3 WEST WATER	S	S	S	N/A	S	195 PSI	2018/01		5	
36	36	Dry chemical/10 lb	Sunto	MCL3 WEST WATER	S	S	S	N/A	S	195 PSI	2018/01		5	
37	37	Dry chemical/10 lb	Sunto	MCL3 WEST WATER	S	S	S	N/A	S	195 PSI	2018/01		5	
38	38	Dry chemical/10 lb	Sunto	MCL3 WEST WATER	S	S	S	N/A	S	195 PSI	2018/01		5	
39	39	Dry chemical/10 lb	Sunto	MCL3 WEST WATER	S	S	S	N/A	S	195 PSI	2018/01		5	
40	40	Dry chemical/10 lb	Sunto	MCL3 BC 24	S	S	S	N/A	S	195 PSI	2018/01		5	
41	41	Dry chemical/10 lb	Sunto	MCL3 OP 98	S	S	S	N/A	S	195 PSI	2018/01		5	
42	42	Dry chemical/10 lb	Sunto	MCL3 TX-02 Transformer	S	S	S	N/A	S	195 PSI	2018/01		5	
43	43	Dry chemical/10 lb	Sunto	MCL3 TX-01 Transformer	S	S	S	N/A	S	195 PSI	2018/01		5	
44	44	Dry chemical/10 lb	Sunto	MCL3 TX-01 Transformer	S	S	S	N/A	S	195 PSI	2018/01		5	
45	45	Dry chemical/10 lb	Sunto	MCL3 BC 20	S	S	S	N/A	S	195 PSI	2018/01		5	

S = Satisfactory US = Unsatisfactory N/A = Not Applicable



**Takachiho Fire, Security & Services (Thailand) Ltd.**  
1858/110-111 Interlink Tower Bangna 25 Fl.,  
Debaratna Road, Bangna Tai, Bangna,  
Bangkok 10260, Thailand.  
Telephone no. : 02-366 -9000  
Facsimile no. : 02-366-9090  
[www.tkfs.co.th](http://www.tkfs.co.th)

## INSPECTION PORTABLE FIRE EXTINGUISHERS

### Dry Chemical Portable Fire Extinguisher

Client : NS BLUE SCOPE STEEL THAILAND

Inspection Date : 7 August 2023

Inspector : Subin, Pattanasit, Somkid, Anuchit, Kittiphop

Item	Ext.No.	Type/lb	Brand	Location		Hose ,Nozzle	fill cap	handle,shell	Gas cartridge	Dry Powder or Water Foam	Pressurere ading	Date of Manufacture	Date of Hydro Test	Total Year	Remark
				Building Area											
46	46	Dry chemical/10 lb		MCL3 BC 20		S	S	S	N/A	S	195 PSI	2018/01		5	
47	47	Dry chemical/10 lb	Sunto	MCL3 BC 18		S	S	S	N/A	S	195 PSI	2018/01		5	
48	48	Dry chemical/10 lb	Sunto	MCL3 OP 102		S	S	S	N/A	S	195 PSI	2018/01		5	
49	49	Dry chemical/10 lb	Sunto	MCL3 OP 104		S	S	S	N/A	S	195 PSI	2018/01		5	
50	50	Dry chemical/10 lb	Sunto	MCL3 IN GOT/BC 15		S	S	S	N/A	S	195 PSI	2018/01		5	
51	51	Dry chemical/10 lb	Sunto	MCL3 IN GOT/BC 14		S	S	S	N/A	S	195 PSI	2018/01		5	
52	52	Dry chemical/10 lb	Sunto	MCL3 IN GOT/OP 109		S	S	S	N/A	S	195 PSI	2018/01		5	
53	53	Dry chemical/10 lb	Sunto	MCL3 IN GOT/OP 106		S	S	S	N/A	S	195 PSI	2018/01		5	
54	54	Dry chemical/10 lb	Sunto	MCL3 IN GOT/OP 105		S	S	S	N/A	S	195 PSI	2018/01		5	
55	55	Dry chemical/10 lb	Sunto	MCL3 Main Pot Calla		S	S	S	N/A	S	195 PSI	2018/01		5	
56	56	Dry chemical/10 lb	Sunto	MCL3 Main Pot Calla		S	S	S	N/A	S	195 PSI	2018/01		5	
57	57	Dry chemical/10 lb	Sunto	MCL3 Generator room		S	S	S	N/A	S	195 PSI	2018/01		5	
58	58	Dry chemical/10 lb	Sunto	MCL3 Generator room		S	S	S	N/A	S	195 PSI	2018/01		5	
59	59	Dry chemical/10 lb	Sunto	MCL3 TX-07 Transformer		S	S	S	N/A	S	195 PSI	2018/01		5	
60	60	Dry chemical/10 lb	Sunto	MCL3 Chemical store		S	S	S	N/A	S	195 PSI	2018/01		5	

S = Satisfactory US = Unsatisfactory N/A = Not Applicable



**Takachiho Fire, Security & Services (Thailand) Ltd.**  
1858/110-111 Interlink Tower Bangna 25 Fl.,  
Debaratna Road, Bangna Tai, Bangna,  
Bangkok 10260, Thailand.  
Telephone no. : 02-366 -9000  
Facsimile no. : 02-366-9090  
[www.tkfs.co.th](http://www.tkfs.co.th)

## INSPECTION PORTABLE FIRE EXTINGUISHERS

### Dry Chemical Portable Fire Extinguisher

Client : NS BLUE SCOPE STEEL THAILAND

Inspection Date : 7 August 2023

Inspector : Subin, Pattanasit, Somkid, Anuchit, Kittiphop

Item	Ext.No.	Type/lb	Brand	Location		Hose ,Nozzle	fill cap	handle,shell	Gas cartridge	Dry Powder or Water Foam	Pressurere ading	Date of Manufacture	Date of Hydro Test	Total Year	Remark
					Building Area										
61	61	Dry chemical/10 lb	Sunto	MCL3	Chemical store	S	S	S	N/A	S	195 PSI	2018/01		5	
62	62	Dry chemical/10 lb	Sunto	MCL3	BC 10	S	S	S	N/A	S	195 PSI	2018/01		5	
63	63	Dry chemical/10 lb	Sunto	MCL3	COATOR FL.G	S	S	S	N/A	S	195 PSI	2018/01		5	
64	64	Dry chemical/10 lb	Sunto	MCL3	COATOR FL.1	S	S	S	N/A	S	195 PSI	2018/01		5	
65	65	Dry chemical/10 lb	Sunto	MCL3	STS FL.3	S	S	S	N/A	S	195 PSI	2018/01		5	
66	66	Dry chemical/10 lb	Sunto	MCL3	STS FL.4	S	S	S	N/A	S	195 PSI	2018/01		5	
67	67	Dry chemical/10 lb	Sunto	MCL3	STS FL.5	S	S	S	N/A	S	195 PSI	2018/01		5	
68	68	Dry chemical/50 lb	Sunto	MCL3	STS FL.5	S	S	S	N/A	S	195 PSI	2018/01		5	
69	69	Dry chemical/50 lb	Sunto	MCL3	STS FL.6	S	S	S	N/A	S	195 PSI	2018/01		5	
70	70	Dry chemical/50 lb	Sunto	MCL3	STS FL.7	S	S	S	N/A	S	195 PSI	2018/01		5	
71	71	Dry chemical/10 lb	Sunto	MCL3	STS FL.8	S	S	S	N/A	S	195 PSI	2018/01		5	
72	72	Dry chemical/10 lb	Sunto	MCL3	Exit FL.5	S	S	S	N/A	S	195 PSI	2018/01		5	
73	73	Dry chemical/50 lb	Sunto	MCL3	Exit FL.3	S	S	S	N/A	S	195 PSI	2018/01		5	
74	74	Dry chemical/10 lb	Sunto	MCL3	OP116	S	S	S	N/A	S	195 PSI	2018/01		5	
75	75	Dry chemical/10 lb	Sunto	MCL3	OP117	S	S	S	N/A	S	195 PSI	2018/01		5	

S = Satisfactory US = Unsatisfactory N/A = Not Applicable



**Takachiho Fire, Security & Services (Thailand) Ltd.**  
1858/110-111 Interlink Tower Bangna 25 Fl.,  
Debaratna Road, Bangna Tai, Bangna,  
Bangkok 10260, Thailand.  
Telephone no. : 02-366 -9000  
Facsimile no. : 02-366-9090  
[www.tkfs.co.th](http://www.tkfs.co.th)

## INSPECTION PORTABLE FIRE EXTINGUISHERS

### Dry Chemical Portable Fire Extinguisher

Client : NS BLUE SCOPE STEEL THAILAND

Inspection Date : 7 August 2023

Inspector : Subin, Pattanasit, Somkid, Anuchit, Kittiphop

Item	Ext.No.	Type/lb	Brand	Location Building Area	Hose ,Nozzle	fill cap	handle,shell	Gas cartridge	Dry Powder or Water Foam	Pressurere ading	Date of Manufacture	Date of Hydro Test	Total Year	Remark
76	76	Dry chemical/50 lb	Sunto	MCL3 RTO	S	S	S	N/A	S	195 PSI	2018/01		5	
77	77	Dry chemical/50 lb	Sunto	MCL3 TX-05 Transformer	S	S	S	N/A	S	195 PSI	2018/01		5	
78	78	Dry chemical/50 lb	Sunto	MCL3 Exit Inergen Tank	S	S	S	N/A	S	195 PSI	2018/01		5	
79	79	Dry chemical/10 lb	Sunto	MCL3 Exit Inergen Tank	S	S	S	N/A	S	195 PSI	2018/01		5	
80	80	Dry chemical/10 lb	Sunto	MCL3 OP 120	S	S	S	N/A	S	195 PSI	2018/01		5	
81	81	Dry chemical/10 lb	Sunto	MCL3 Fire Pump	S	S	S	N/A	S	195 PSI	2018/01		5	
82	82	Dry chemical/10 lb	Sunto	MCL3 Fire Pump	S	S	S	N/A	S	195 PSI	2018/01		5	
83	83	Dry chemical/10 lb	Sunto	MCL3 APC Section FL.2	S	S	S	N/A	S	195 PSI	2018/01		5	
84	84	Dry chemical/10 lb	Sunto	MCL3 APC Section FL.3	S	S	S	N/A	S	195 PSI	2018/01		5	
85	85	Dry chemical/10 lb	Sunto	MCL3 APC Section FL.4	S	S	S	N/A	S	195 PSI	2018/01		5	
86	86	Dry chemical/10 lb	Sunto	MCL3 APC Section FL.5	S	S	S	N/A	S	195 PSI	2018/01		5	
87	87	Dry chemical/10 lb	Sunto	MCL3 APC Section FL.6	S	S	S	N/A	S	195 PSI	2018/01		5	
88	88	Dry chemical/10 lb	Sunto	MCL3 APC Section FL.7	S	S	S	N/A	S	195 PSI	2018/01		5	
89	89	Dry chemical/10 lb	Sunto	MCL3 APC Section FL.8	S	S	S	N/A	S	195 PSI	2018/01		5	
90	90	Dry chemical/10 lb	Sunto	MCL3 Furnace Section FL.2	S	S	S	N/A	S	195 PSI	2018/01		5	

S = Satisfactory US = Unsatisfactory N/A = Not Applicable

## INSPECTION PORTABLE FIRE EXTINGUISHERS

### Dry Chemical Portable Fire Extinguisher

Client : NS BLUE SCOPE STEEL THAILAND

Inspection Date : 7 August 2023

Inspector : Subin, Pattanasit, Somkid, Anuchit, Kittiphop

Item	Ext.No.	Type/lb	Brand	Location Building Area	Hose ,Nozzle	fill cap	handle,shell	Gas cartridge	Dry Powder or Water Foam	Pressurere ading	Date of Manufacture	Date of Hydro Test	Total Year	Remark
91	91	Dry chemical/10 lb	Sunto	MCL3 Furnace Section FL.2	S	S	S	N/A	S	195 PSI	2018/01		5	
92	92	Dry chemical/10 lb	Sunto	MCL3 Furnace Section FL.2	S	S	S	N/A	S	195 PSI	2018/01		5	
93	93	Dry chemical/10 lb	Sunto	MCL3 Cleaning FL.2	S	S	S	N/A	S	195 PSI	2018/01		5	
94	94	Dry chemical/10 lb	Sunto	MCL3 Cleaning FL.2	S	S	S	N/A	S	195 PSI	2018/01		5	
95	95	Dry chemical/10 lb	Sunto	MCL3 Furnace Section FL.2	S	S	S	N/A	S	195 PSI	2018/01		5	
96	96	Dry chemical/10 lb	Sunto	MCL3 Furnace Section FL.2	S	S	S	N/A	S	195 PSI	2018/01		5	
97	97	Dry chemical/10 lb	Sunto	MCL3 Furnace Section FL.2	S	S	S	N/A	S	195 PSI	2018/01		5	
98	98	Dry chemical/50 lb	Sunto	MCL3 Cleaning FL.1	S	S	S	N/A	S	195 PSI	2018/01		5	
99	99	Dry chemical/50 lb	Sunto	MCL3 Entry Section	S	S	S	N/A	S	195 PSI	2018/01		5	
100	100	Dry chemical/50 lb	Sunto	MCL3 Entry Section	S	S	S	N/A	S	195 PSI	2018/01		5	
101	101	Dry chemical/10 lb	Sunto	MCL3 STS FL.G	S	S	S	N/A	S	195 PSI	2018/01		5	
102	102	Dry chemical/10 lb	Sunto	MCL3 STS FL.G	S	S	S	N/A	S	195 PSI	2018/01		5	
103	103	Dry chemical/50 lb	Sunto	MCL3 Exit Pulpit	S	S	S	N/A	S	195 PSI	2018/01		5	
104	104	Dry chemical/10 lb	Sunto	MCL3 Cooling	S	S	S	N/A	S	195 PSI	2018/01		5	
105	105	Dry chemical/10 lb	Sunto	MCL3 Gamling	S	S	S	N/A	S	195 PSI	2018/01		5	

S = Satisfactory US = Unsatisfactory N/A = Not Applicable



# INSPECTION PORTABLE FIRE EXTINGUISHERS

Client : NS BLUE SCOPE STEEL THAILAND

Inspector : Subin, Pattanasit, Somkid, Anuchit Kittiphop

S = Satisfactory US = Unsatisfactory N/A = Not Applicable

## CO2 Portable Fire Extinguisher

Client : NS BLUE SCOPE STEEL THAILAND

REF. Contract NO : SC1000142

Inspection Date : 7 August 2023

Inspector : Subin, Pattanasit, Somkid, Anuchit, Kittiphop

Witness : Khun Songpon, Khun Sonthaya

Item	Type CO2 (Kg)	Brand	Location	Hose and Nozzle is Unobstruct	Seal Wire is intact	Physical	STD Cylinder Weight	Actual Gross Weight	% Lost Weight	Date of Manufacture	Date of Hydro Test	Total Year	Remark
			Building Area										
1	Co2/4.5	Sunto	MCL3 OP122/ BJ4	S	S	S	12.5 Kg	12.5 Kg	0%	Jan-18		5	
2	Co2/4.5	Sunto	MCL3 BHG 4	S	S	S	12.5 Kg	12.6 Kg	0%	Jan-18		5	
3	Co2/4.5	Sunto	MCL3 BE 4	S	S	S	12.5 Kg	12.4 Kg	0%	Jan-18		5	
4	Co2/4.5	Sunto	MCL3 BH 4	S	S	S	12.5 Kg	12.6 Kg	0%	Jan-18		5	
5	Co2/4.5	Sunto	MCL3 OP126/ BJ 5	S	S	S	12.5 Kg	12.8 Kg	0%	Jan-18		5	
6	Co2/4.5	Sunto	MCL3 BH 5	S	S	S	12.5 Kg	11.9 Kg	0%	Jan-18		5	
7	Co2/4.5	Sunto	MCL3 BE 6	S	S	S	12.5 Kg	12.5 Kg	0%	Jan-18		5	
8	Co2/4.5	Sunto	MCL3 WEST LAB ROOM	S	S	S	12.5 Kg	12.5 Kg	0%	Jan-18		5	
9	Co2/4.5	Sunto	MCL3 BE 8	S	S	S	12.5 Kg	12.6 Kg	0%	Jan-18		5	
10	Co2/4.5	Sunto	MCL3 OP 127/BE 10	S	S	S	12.5 Kg	12.7 Kg	0%	Jan-18		5	
11	Co2/4.5	Sunto	MCL3 BE 11 / OP 129	S	S	S	12.5 Kg	13.1 Kg	0%	Jan-18		5	
12	Co2/4.5	Sunto	MCL3 PORT PU / PIT RM.	S	S	S	12.5 Kg	12.2 Kg	0%	Jan-18		5	
13	Co2/4.5	Sunto	MCL3 BE 12	S	S	S	12.5 Kg	12.5 Kg	0%	Jan-18		5	
14	Co2/4.5	Sunto	MCL3 BE 16	S	S	S	12.5 Kg	12.5 Kg	0%	Jan-18		5	
15	Co2/4.5	Sunto	MCL3 POT CELLAR	S	S	S	12.5 Kg	12.6 Kg	0%	Jan-18		5	
16	Co2/4.5	Sunto	MCL3 OP 131	S	S	S	12.5 Kg	12.7 Kg	0%	Jan-18		5	
17	Co2/4.5	Sunto	MCL3 BE 19	S	S	S	12.5 Kg	12.5 Kg	0%	Jan-18		5	
18	Co2/4.5	Sunto	MCL3 OP 132	S	S	S	12.5 Kg	12.6 Kg	0%	Jan-18		5	
19	Co2/4.5	Sunto	MCL3 BE 24	S	S	S	12.5 Kg	12.3 Kg	0%	Jan-18		5	
20	Co2/4.5	Sunto	MCL3 MEETING Room.	S	S	S	12.5 Kg	12.5 Kg	0%	Jan-18		5	
21	Co2/4.5	Sunto	MCL3 BE 27	S	S	S	12.5 Kg	12.5 Kg	0%	Jan-18		5	
22	Co2/4.5	Sunto	MCL3 ENTRY PULPIT	S	S	S	12.5 Kg	12.6 kg	0%	Jan-18		5	
23	Co2/4.5	Sunto	MCL3 OP 134	S	S	S	12.5 Kg	12.5 Kg	0%	Jan-18		5	
24	Co2/4.5	Sunto	MCL3 BE 31	S	S	S	12.5 Kg	12.6 Kg	0%	Jan-18		5	
25	Co2/4.5	Sunto	MCL3 BE 32	S	S	S	12.5 Kg	12.4 Kg	0%	Jan-18		5	
26	Co2/4.5	Sunto	MCL3 OP 135/BE 34	S	S	S	12.5 Kg	12.5 Kg	0%	Jan-18		5	
27	Co2/4.5	Sunto	MCL3 OP 136/ OP 94	S	S	S	12.5 Kg	12.5 Kg	0%	Jan-18		5	
28	Co2/4.5	Sunto	MCL3 BC 34 / OP 95	S	S	S	12.5 Kg	12.8 Kg	0%	Jan-18		5	
29	Co2/4.5	Sunto	MCL3 BC 32	S	S	S	12.5 Kg	12.5 Kg	0%	Jan-18		5	
30	Co2/4.5	Sunto	MCL3 BC 31	S	S	S	12.5 Kg	12.5 Kg	0%	Jan-18		5	

S = Satisfactory US = Unsatisfactory N/A = Not Applicable

## CO2 Portable Fire Extinguisher

Client : NS BLUE SCOPE STEEL THAILAND

REF. Contract NO : SC1000142

Inspection Date : 7 August 2023

Inspector : Subin, Pattanasit, Somkid, Anuchit, Kittiphop

Witness : Khun Songpon, Khun Sonthaya

Item	Type CO2 (Kg)	Brand	Location	Hose and Nozzle is Unobstruct	Seal Wire is intact	Physical	STD Cylinder Weight	Actual Gross Weight	% Lost Weight	Date of Manufacture	Date of Hydro Test	Total Year	Remark
			Building Area										
31	Co2/4.5	Sunto	MCL3 WWT / BC 25	S	S	S	12.5 Kg	12.6 Kg	0%	Jan-18		5	
32	Co2/4.5	Sunto	MCL3 AIR COM / BC 26	S	S	S	12.5 Kg	12.5 Kg	0%	Jan-18		5	
33	Co2/4.5	Sunto	MCL3 WWT / TK 2	S	S	S	12.5 Kg	12.4 Kg	0%	Jan-18		5	
34	Co2/4.5	Sunto	MCL3 WEST WATER	S	S	S	12.5 Kg	12.6 Kg	0%	Jan-18		5	
35	Co2/4.5	Sunto	MCL3 WEST WATER	S	S	S	12.5 Kg	12.7 Kg	0%	Jan-18		5	
36	Co2/4.5	Sunto	MCL3 WEST WATER	S	S	S	12.5 Kg	12.3 Kg	0%	Jan-18		5	
37	Co2/4.5	Sunto	MCL3 WEST WATER	S	S	S	12.5 Kg	12.4 Kg	0%	Jan-18		5	
38	Co2/4.5	Sunto	MCL3 WEST WATER	S	S	S	12.5 Kg	12.5 Kg	0%	Jan-18		5	
39	Co2/4.5	Sunto	MCL3 WEST WATER	S	S	S	12.5 Kg	12.5 Kg	0%	Jan-18		5	
40	Co2/4.5	Sunto	MCL3 EER Rm. WWT	S	S	S	12.5 Kg	12.7 Kg	0%	Jan-18		5	
41	Co2/4.5	Sunto	MCL3 BC 24	S	S	S	12.5 Kg	12.5 Kg	0%	Jan-18		5	
42	Co2/4.5	Sunto	MCL3 OP 98	S	S	S	12.5 Kg	12.5 Kg	0%	Jan-18		5	
43	Co2/4.5	Sunto	MCL3 Entry EER Rm.	S	S	S	12.5 Kg	12.5 Kg	0%	Jan-18		5	
44	Co2/4.5	Sunto	MCL3 Entry EER Rm.	S	S	S	12.5 Kg	12.6 Kg	0%	Jan-18		5	
45	Co2/4.5	Sunto	MCL3 Entry EER Rm.	S	S	S	12.5 Kg	12.6 Kg	0%	Jan-18		5	
46	Co2/4.5	Sunto	MCL3 Nitrogen Tank	S	S	S	12.5 Kg	11.7 Kg	-6.4%	Jan-18		5	
47	Co2/4.5	Sunto	MCL3 tx-02 transformer	S	S	S	12.5 Kg	12.6 Kg	0%	Jan-18		5	
48	Co2/4.5	Sunto	MCL3 BC 20	S	S	S	12.5 Kg	12.7 Kg	0%	Jan-18		5	
49	Co2/4.5	Sunto	MCL3 BC 20	S	S	S	12.5 Kg	12.5 Kg	0%	Jan-18		5	
50	Co2/4.5	Sunto	MCL3 BC 18	S	S	S	12.5 Kg	12.4 Kg	0%	Jan-18		5	
51	Co2/4.5	Sunto	MCL3 OP 102	S	S	S	12.5 Kg	12.5 Kg	0%	Jan-18		5	
52	Co2/4.5	Sunto	MCL3 OP 104	S	S	S	12.5 Kg	12.5 Kg	0%	Jan-18		5	
53	Co2/4.5	Sunto	MCL3 IN GOT/BC 15	S	S	S	12.5 Kg	12.6 Kg	0%	Jan-18		5	
54	Co2/4.5	Sunto	MCL3 IN GOT/BC 14	S	S	S	12.5 Kg	12.6 Kg	0%	Jan-18		5	
55	Co2/4.5	Sunto	MCL3 IN GOT/OP 109	S	S	S	12.5 Kg	12.6 Kg	0%	Jan-18		5	
56	Co2/4.5	Sunto	MCL3 IN GOT/OP 106	S	S	S	12.5 Kg	12.7 Kg	0%	Jan-18		5	
57	Co2/4.5	Sunto	MCL3 IN GOT/OP 105	S	S	S	12.5 Kg	12.4 Kg	0%	Jan-18		5	
58	Co2/4.5	Sunto	MCL3 Main Pot	S	S	S	12.5 Kg	12.5 Kg	0%	Jan-18		5	
59	Co2/4.5	Sunto	MCL3 Main Pot	S	S	S	12.5 Kg	12.5 Kg	0%	Jan-18		5	
60	Co2/4.5	Sunto	MCL3 Pot EER Room.	S	S	S	12.5 Kg	12.6 Kg	0%	Jan-18		5	

S = Satisfactory US = Unsatisfactory N/A = Not Applicable

## CO2 Portable Fire Extinguisher

Client : NS BLUE SCOPE STEEL THAILAND

REF. Contract NO : SC1000142

Inspection Date : 7 August 2023

Inspector : Subin, Pattanasit, Somkid, Anuchit, Kittiphot

Witness : Khun Songpon, Khun Sonthaya

Item	Type CO2 (Kg)	Brand	Location	Hose and Nozzle is Unobstruct	Seal Wire is intact	Physical	STD Cylinder Weight	Actual Gross Weight	% Lost Weight	Date of Manufacture	Date of Hydro Test	Total Year	Remark
			Building Area										
61	Co2/4.5	Sunto	MCL3 Pot EER Room.	S	S	S	12.5 Kg	12.7 Kg	0%	Jan-18		5	
62	Co2/4.5	Sunto	MCL3 Generator room	S	S	S	12.5 Kg	12.6 Kg	0%	Jan-18		5	
63	Co2/4.5	Sunto	MCL3 Generator room	S	S	S	12.5 Kg	12.7 Kg	0%	Jan-18		5	
64	Co2/4.5	Sunto	MCL3 tx-07 transformer	S	S	S	12.5 Kg	12.6 Kg	0%	Jan-18		5	
65	Co2/4.5	Sunto	MCL3 Chemical Store	S	S	S	12.5 Kg	12.7 Kg	0%	Jan-18		5	
66	Co2/4.5	Sunto	MCL3 Chemical Store	S	S	S	12.5 Kg	12.9 Kg	0%	Jan-18		5	
67	Co2/4.5	Sunto	MCL3 BC 10	S	S	S	12.5 Kg	12.5 Kg	0%	Jan-18		5	
68	Co2/4.5	Sunto	MCL3 COATOR Room.	S	S	S	12.5 Kg	12.5 Kg	0%	Jan-18		5	
69	Co2/4.5	Sunto	MCL3 COATOR Room.	S	S	S	12.5 Kg	12.5 Kg	0%	Jan-18		5	
70	Co2/4.5	Sunto	MCL3 STS FL.3	S	S	S	12.5 Kg	12.6 Kg	0%	Jan-18		5	
71	Co2/4.5	Sunto	MCL3 STS FL.4	S	S	S	12.6 Kg	12.6 Kg	0%	Jan-18		5	
72	Co2/4.5	Sunto	MCL3 STS FL.5	S	S	S	12.5 Kg	12.7 Kg	0%	Jan-18		5	
73	Co2/4.5	Sunto	MCL3 STS FL.8	S	S	S	12.5 Kg	12.6 Kg	0%	Jan-18		5	
74	Co2/4.5	Sunto	MCL3 Exit FL.5	S	S	S	12.5 Kg	12.3 Kg	0%	Jan-18		5	
75	Co2/4.5	Sunto	MCL3 Exit FL.3	S	S	S	12.5 Kg	12.1 Kg	0%	Jan-18		5	
76	Co2/4.5	Sunto	MCL3 OP 116	S	S	S	12.5 Kg	12.5 Kg	0%	Jan-18		5	
77	Co2/4.5	Sunto	MCL3 OP 117	S	S	S	12.5 Kg	12.5 Kg	0%	Jan-18		5	
78	Co2/4.5	Sunto	MCL3 Exit EER	S	S	S	12.5 Kg	12.8 Kg	0%	Jan-18		5	
79	Co2/4.5	Sunto	MCL3 Exit EER	S	S	S	12.5 Kg	12.6 Kg	0%	Jan-18		5	
80	Co2/4.5	Sunto	MCL3 OP 118	S	S	S	12.5 Kg	12.6 kg	0%	Jan-18		5	
81	Co2/4.5	Sunto	MCL3 Exit PLC room	S	S	S	12.5 Kg	12.4 Kg	0%	Jan-18		5	
82	Co2/4.5	Sunto	MCL3 Exit PLC room	S	S	S	12.5 Kg	12.6 Kg	0%	Jan-18		5	
83	Co2/4.5	Sunto	MCL3 Exit PLC room	S	S	S	12.5 Kg	12.6 Kg	0%	Jan-18		5	
84	Co2/4.5	Sunto	MCL3 RTO	S	S	S	12.5 Kg	12.5 Kg	0%	Jan-18		5	
85	Co2/4.5	Sunto	MCL3 tx-05 transformer	S	S	S	12.5 Kg	12.4 Kg	0%	Jan-18		5	
86	Co2/4.5	Sunto	MCL3 OP 120	S	S	S	12.5 Kg	12.3 Kg	0%	Jan-18		5	
87	Co2/4.5	Sunto	MCL3 Fire Pump	S	S	S	12.5 Kg	12.4 Kg	0%	Jan-18		5	
88	Co2/4.5	Sunto	MCL3 Fire Pump	S	S	S	12.5 Kg	12.5 Kg	0%	Jan-18		5	
89	Co2/4.5	Sunto	MCL3 APC Section FL.2	S	S	S	12.5 Kg	12.5 Kg	0%	Jan-18		5	
90	Co2/4.5	Sunto	MCL3 APC Section FL.3	S	S	S	12.5 Kg	12.5 Kg	0%	Jan-18		5	

S = Satisfactory US = Unsatisfactory N/A = Not Applicable

## CO2 Portable Fire Extinguisher

Client : NS BLUE SCOPE STEEL THAILAND

REF. Contract NO : SC1000142

Inspection Date : 7 August 2023

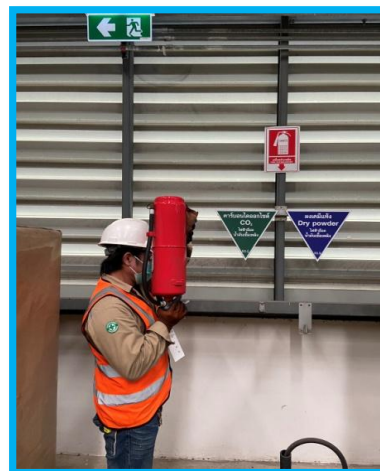
Inspector : Subin, Pattanasit, Somkid, Anuchit, Kittiphop

Witness : Khun Songpon, Khun Sonthaya

Item	Type CO2 (Kg)	Brand	Location	Hose and Nozzle is Unobstruct	Seal Wire is intact	Physical	STD Cylinder Weight	Actual Gross Weight	% Lost Weight	Date of Manufacture	Date of Hydro Test	Total Year	Remark
			Building Area										
91	Co2/4.5	Sunto	MCL3 APC Section FL.4	S	S	S	12.5 Kg	12.5 Kg	0%	Jan-18		5	
92	Co2/4.5	Sunto	MCL3 APC Section FL.5	S	S	S	12.5 Kg	12.5 Kg	0%	Jan-18		5	
93	Co2/4.5	Sunto	MCL3 APC Section FL.6	S	S	S	12.5 Kg	12.6 Kg	0%	Jan-18		5	
94	Co2/4.5	Sunto	MCL3 APC Section FL.7	S	S	S	12.5 Kg	12.6 Kg	0%	Jan-18		5	
95	Co2/4.5	Sunto	MCL3 APC Section FL.8	S	S	S	12.5 Kg	12.5 Kg	0%	Jan-18		5	
96	Co2/4.5	Sunto	MCL3 FURNACE FL.2	S	S	S	12.5 Kg	12.6 Kg	0%	Jan-18		5	
97	Co2/4.5	Sunto	MCL3 FURNACE FL.2	S	S	S	12.5 Kg	12.4 Kg	0%	Jan-18		5	
98	Co2/4.5	Sunto	MCL3 FURNACE FL.2	S	S	S	12.5 Kg	12.5 Kg	0%	Jan-18		5	
99	Co2/4.5	Sunto	MCL3 CLEANING FL.2	S	S	S	12.5 Kg	12.6 Kg	0%	Jan-18		5	
100	Co2/4.5	Sunto	MCL3 CLEANING FL.2	S	S	S	12.5 Kg	12.4 Kg	0%	Jan-18		5	
101	Co2/4.5	Sunto	MCL3 FURNACE FL.2	S	S	S	12.5 Kg	12.4 Kg	0%	Jan-18		5	
102	Co2/4.5	Sunto	MCL3 FURNACE FL.2	S	S	S	12.5 Kg	12.7 Kg	0%	Jan-18		5	
103	Co2/4.5	Sunto	MCL3 FURNACE FL.2	S	S	S	12.5 Kg	12.4 Kg	0%	Jan-18		5	
104	Co2/4.5	Sunto	MCL3 CLEANING FL.1	S	S	S	12.5 Kg	12.3 Kg	0%	Jan-18		5	
105	Co2/4.5	Sunto	MCL3 ENTRY Section	S	S	S	12.5 Kg	12.6 Kg	0%	Jan-18		5	
106	Co2/4.5	Sunto	MCL3 ENTRY Section	S	S	S	12.5 Kg	12.5 Kg	0%	Jan-18		5	
107	Co2/4.5	Sunto	MCL3 STS FL.G	S	S	S	12.5 Kg	12.6 Kg	0%	Jan-18		5	
108	Co2/4.5	Sunto	MCL3 STS FL.G	S	S	S	12.5 Kg	12.3 Kg	0%	Jan-18		5	
109	Co2/4.5	Sunto	MCL3 Exit PulPit	S	S	S	12.5 Kg	12.6 Kg	0%	Jan-18		5	
110	Co2/4.5	Sunto	MCL3 Cooling	S	S	S	12.5 Kg	12.4 Kg	0%	Jan-18		5	
111	Co2/4.5	Sunto	MCL3 Pulpit Gamling	S	S	S	12.5 Kg	12.3 Kg	0%	Jan-18		5	
112	Co2/4.5	Sunto	MCL3 STS FL.2	S	S	S	12.5 Kg	12.5 Kg	0%	Jan-18		5	

S = Satisfactory US = Unsatisfactory N/A = Not Applicable

## FUNCTION TEST PORTABLE FIRE EXTINGUISHERS SYSTEM



**EMERGENCY LIGHT**

## Emergency Lighting

 Client : NS BLUE SCOPE STEEL THAILAND(MCL3)

 REF.Contract NO : 6/year

 Inspection Date : 31 July 2023

 Inspector : Subin, Pattanasit, Somkid, Anuchit, Kittiphop

 Witness : Khun Songpon, Khun Sonthaya

Item	Ext.No.	Brand	Location Building Area	Electric Bulb is good Condition	Power Supply	Battery Full ready for operation	Circuit Board	Physical	Remark
1	EML 1	MAX	MCL3 OP126/BJ 5	S	S	S	S	S	
2	EML 2	Sunny	MCL3 BH 5	US	US	US	US	US	อุปกรณ์เสีย
3	EML 3	Sunny	MCL3 BF 5	US	US	US	US	US	อุปกรณ์เสีย
4	EML 4	Sunny	MCL3 LAB Room.	S	S	S	S	S	
5	EML 5	Sunny	MCL3 BE 7	S	S	S	S	S	
6	EML 6	Sunny	MCL3 BE 9	S	S	S	S	S	
7	EML 7	Sunny	MCL3 OP 129/BE 11	S	S	S	S	S	
8	EML 8	Sunny	MCL3 BE 13	S	S	S	S	S	
9	EML 9	Sunny	MCL3 BE 15	S	S	S	S	S	
10	EML 10	Sunny	MCL3 OP130/BE 17	S	S	S	S	S	
11	EML 11	Sunny	MCL3 BE 19	S	S	S	S	S	
12	EML 12	Sunny	MCL3 BE 21	S	S	S	S	S	
13	EML 13	MAX	MCL3 BE 23	S	S	S	S	S	
14	EML 14	Sunny	MCL3 BE 25	S	S	S	S	S	
15	EML 15	Sunny	MCL3 BE 27	S	S	S	S	S	
16	EML 16	MAX	MCL3 ENTRY PULPIT Room.	S	S	S	S	S	
17	EML 17	Sunny	MCL3 BE 29	S	S	S	S	S	
18	EML 18	MAX	MCL3 BE 31	S	S	S	S	S	
19	EML 19	Sunny	MCL3 BE 33	S	S	S	S	S	
20	EML 20	Sunny	MCL3 BE 34	S	S	S	S	S	
21	EML 21	Sunny	MCL3 OP 95/BC 34	S	S	S	S	S	
22	EML 22	Sunny	MCL3 BC 32	US	US	US	US	US	อุปกรณ์เสีย
23	EML 23	Sunny	MCL3 BC 30	S	S	S	S	S	
24	EML 24	Sunny	MCL3 BC 28	S	S	S	S	S	
25	EML 25	Sunny	MCL3 OP 96/BC 26	S	S	S	S	S	
26	EML 26	MAX	MCL3 BC 24	S	S	S	S	S	
27	EML 27	Sunny	MCL3 BC 22	S	S	S	S	S	
28	EML 28	Sunny	MCL3 BC 20	S	S	S	S	S	
29	EML 29	Sunny	MCL3 BE 18	S	S	S	S	S	
30	EML 30	Sunny	MCL3 OP 104	S	S	S	S	S	

S = Satisfactory US = Unsatisfactory N/A = Not Applicable

## Emergency Lighting

 Client : NS BLUE SCOPE STEEL THAILAND(MCL3)

 REF.Contract NO : 6/year

 Inspection Date : 31 July 2023

 Inspector : Subin, Pattanasit, Somkid, Anuchit, Kittiphop

 Witness : Khun Songpon, Khun Sonthaya

Item	Ext.No.	Brand	Location Building Area	Electric Bulb is good Condition	Power Supply	Battery Full ready for operation	Circuit Board	Physical	Remark
31	EML 31	Sunny	MCL3 BC 16	S	S	S	S	S	
32	EML 32	Sunny	MCL3 BC 14	S	S	S	S	S	
33	EML 33	Sunny	MCL3 BC 12	S	S	S	S	S	
34	EML 34	Sunny	MCL3 BC 10	S	S	S	S	S	
35	EML 35	Sunny	MCL3 BC 8	S	S	S	S	S	เปลี่ยนแบตเตอรี่ 31/7/23
36	EML 36	Sunny	MCL3 COATOR Room. FL.1	S	S	S	S	S	เปลี่ยนแบตเตอรี่ 31/7/23
37	EML 37	Sunny	MCL3 COATOR Room. FL.2	S	S	S	S	S	
38	EML 38	Sunny	MCL3 BC 6	S	S	S	S	S	
39	EML 39	Sunny	MCL3 BC 4-2	US	US	US	US	US	อุปกรณ์เสีย
40	EML 40	Sunny	MCL3 OP121/BC 4	S	S	S	S	S	
41	EML 41	MAX	MCL3 BE 4	S	S	S	S	S	
42	EML 42	Sunny	MCL3 BG 4	S	S	S	S	S	
43	EML 43	MAX	MCL3 BI 4	S	S	S	S	S	
44	EML 44	Sunny	MCL3 TOILET MAN OP 122	S	S	S	S	S	
45	EML 45	MAX	MCL3 TOILET WOMEN OP 122	S	S	S	S	S	
46	EML 46	Sunny	MCL3 PULPIT GAMLING	US	US	US	US	US	อุปกรณ์เสีย
47	EML 47	Sunny	MCL3 TOILET WOMEN OP 127	S	S	S	S	S	
48	EML 48	MAX	MCL3 TOILET MAN OP 127	S	S	S	S	S	
49	EML 49	MAX	MCL3 MEETING Room op118	S	S	S	S	S	
50	EML 50	Sunny	MCL3 TOILET MAN OP 133	S	S	S	S	S	
51	EML 51	Sunny	MCL3 TOILET WOMEN OP 133	S	S	S	S	S	
52	EML 52	Sunny	MCL3 PIT 6	S	S	S	S	S	
53	EML 53	MAX	MCL3 PIT 6	N/A	N/A	N/A	N/A	N/A	เข้าพื้นที่ไม่ได้
54	EML 54	Sunny	MCL3 PIT 7	S	S	S	S	S	
55	EML 55	Sunny	MCL3 PIT 7	S	S	S	S	S	
56	EML 56	Sunny	MCL3 CABLE CELLA	S	S	S	S	S	
57	EML 57	Sunny	MCL3 CABLE CELLA	N/A	N/A	N/A	N/A	N/A	เข้าพื้นที่ไม่ได้
58	EML 58	Sunny	MCL3 WEST WATER LAB Room.	S	S	S	S	S	
59	EML 59	Sunny	MCL3 WEST WATER LAB Room.	S	S	S	S	S	
60	EML 60	Sunny	MCL3 ENTRY EER Room.	S	S	S	S	S	

S = Satisfactory US = Unsatisfactory N/A = Not Applicable



Client : NS BLUE SCOPE STEEL THAILAND(MCL3)

REF.Contract NO : 6/year

Inspection Date : 31 July 2023

Inspector : Kittiphop

Witness : Khun Songpon, Khun Sonthaya

[illegible]

S = Satisfactory US = Unsatisfactory N/A = Not Applicable

**EXIT LIGHT**

## Emergency Exit Inditcator

 Client : NS BLUE SCOPE STEEL THAILAND(MCL3)

 REF.Contract NO : 6/year

 Inspection Date : 31 July 2023

 Inspector : Subin, Pattanasit, Somkid, Anuchit, Kittiphop

 Witness : Khun Songpon, Khun Sonthaya

Item	Ext.No.	Brand	Location Building Area	Electric Bulb is good Condition	Power Supply	Battery Full ready for operation	Circuit Board	Physical	Remark
1	EXL. 1	Sunny	MCL3 OP 126	S	S	S	S	S	
2	EXL. 2	Sunny	MCL3 BH 5	S	S	S	S	S	
3	EXL. 3	MAX	MCL3 BF 5	S	S	S	S	S	
4	EXL. 4	Sunny	MCL3 LAB ROOM	S	S	S	S	S	
5	EXL. 5	Sunny	MCL3 OP 127	S	S	S	S	S	
6	EXL. 6	Sunny	MCL3 OP 129	S	S	S	S	S	
7	EXL. 7	Sunny	MCL3 BE 13	S	S	S	S	S	
8	EXL. 8	Sunny	MCL3 BE 15	S	S	S	S	S	
9	EXL. 9	Sunny	MCL3 OP 130	S	S	S	S	S	
10	EXL. 10	Sunny	MCL3 BE 19	S	S	S	S	S	
11	EXL. 11	Sunny	MCL3 OP 132	S	S	S	S	S	
12	EXL. 12	Sunny	MCL3 OP 133	S	S	S	S	S	
13	EXL. 13	Sunny	MCL3 OP 134	S	S	S	S	S	
14	EXL. 14	Sunny	MCL3 BE 29	S	S	S	S	S	
15	EXL. 15	Sunny	MCL3 BE 31	S	S	S	S	S	
16	EXL. 16	Sunny	MCL3 OP 134/BE 34	S	S	S	S	S	
17	EXL. 17	Sunny	MCL3 OP 95/BC 34	S	S	S	S	S	
18	EXL. 18	MAX	MCL3 BC 32	S	S	S	S	S	
19	EXL. 19	Sunny	MCL3 BC 30	S	S	S	S	S	
20	EXL. 20	Sunny	MCL3 BC 28	S	S	S	S	S	
21	EXL. 21	Sunny	MCL3 OP 96/BC 26	S	S	S	S	S	
22	EXL. 22	Sunny	MCL3 BC 24	S	S	S	S	S	
23	EXL. 23	Sunny	MCL3 OP 101	S	S	S	S	S	
24	EXL. 24	Sunny	MCL3 BC 20	S	S	S	S	S	
25	EXL. 25	Sunny	MCL3 OP 102	S	S	S	S	S	
26	EXL. 26	Sunny	MCL3 OP 105	S	S	S	S	S	
27	EXL. 27	Sunny	MCL3 OP 108	S	S	S	S	S	
28	EXL. 28	Sunny	MCL3 BE 15	S	S	S	S	S	
29	EXL. 29	Sunny	MCL3 BC 13	S	S	S	S	S	
30	EXL. 30	MAX	MCL3 OP 112	S	S	S	S	S	

S = Satisfactory US = Unsatisfactory N/A = Not Applicable



Client : NS BLUE SCOPE STEEL THAILAND(MCL3)  
REF.Contract NO : 6/year  
Inspection Date : 31 July 2023  
Inspector : Subin, Pattanasit, Somkid, Anuchit, Kittiphop  
Witness : Khun Songpon, Khun Sonthaya

S = Satisfactory US = Unsatisfactory N/A = Not Applicable

## Standard Reference

For this project, our company will follow inspection and maintenance procedures of fire alarm system and fire fighting system by referring to these standards as detail below.

- NFPA 10 – Standard For Portable Fire Extinguishers
- NFPA 11 – Standard For Foam Extinguishers, Low Expansion
- NFPA 12 – Standard On Carbon Dioxide Extinguishers systems
- NFPA 13 – Standard For The Installation of Sprinkler systems
- NFPA 14 – Standard For Installation of Stand Pipe and Hose Systems
- NFPA 15 – Standard For Water Spray Fixed Systems For Fire Protection
- NFPA 20 – Standard For Installation of Centrifugal Fire Pumps
- NFPA 25 – Standard For The Inspection, Testing, and Maintenance of Water-Based  
Fire Protection System
- NFPA 30 – Flammable and Combustible Liquids Code
- NFPA 70 – National Electrical Code
- NFPA 72 – National Fire Alarm Code